



# IntelliEnterprise Release 11 Installation Guide

Created: Sunday, May 22, 2011



# Table of Contents

<b>1</b>	<b>Overview</b>	<b>1</b>
<b>2</b>	<b>Before You Begin</b>	<b>2</b>
	System Configuration	3
<b>3</b>	<b>Installation</b>	<b>4</b>
<b>4</b>	<b>Configuration</b>	<b>6</b>
<b>5</b>	<b>Licensing</b>	<b>14</b>
<b>6</b>	<b>Additional Server Configuration</b>	<b>18</b>
<b>7</b>	<b>Demo Site</b>	<b>19</b>
<b>8</b>	<b>Production Site</b>	<b>20</b>
<b>9</b>	<b>Getting Started</b>	<b>21</b>
<b>10</b>	<b>Intranet Modeler</b>	<b>22</b>
<b>11</b>	<b>Administrative Configuration</b>	<b>25</b>
<b>12</b>	<b>Appendix</b>	<b>26</b>
	Enable IIS on Windows 2003	27
	Configuring SQL For Windows/Mixed Authentication	31

[Home](#) > [Overview](#)

## Overview

Welcome to the adenin TECHNOLOGIES IntelliEnterprise Installation Guide. Please be sure to follow all instructions carefully to create a properly installed and licensed system.

Installation should take no more than 30 minutes on a properly configured system. Please allow additional time if you need to configure your server or database.

### See also

- [Before You Begin](#)
- [Installation](#)
- [Configuration](#)
- [Licensing](#)
- [Additional Server Configuration](#)
- [Demo Site](#)
- [Production Site](#)
- [Getting Started](#)
- [Intranet Modeler](#)
- [Administrative Configuration](#)
- [Appendix](#)

[Home](#) > [Before You Begin](#)

## Before You Begin

Please review the following System Configuration Requirements before installing IntelliEnterprise.

[System Configuration](#)

### See also

[Overview](#)

[Installation](#)

[Configuration](#)

[Licensing](#)

[Additional Server Configuration](#)

[Demo Site](#)

[Production Site](#)

[Getting Started](#)

[Intranet Modeler](#)

[Administrative Configuration](#)

[Appendix](#)

Home > Before You Begin > System ConfigurationEnable IIS on Windows 2003

## System Configuration

adenin IntelliEnterprise Release 11 should be installed on a Windows Server Platform, using IIS and Microsoft SQL Server.

Evaluations may be performed on a Windows XP, Vista or 7 machine, running Microsoft SQL Server Express.

### Supported Windows Versions

Windows 2003 Server

Internet Information Server (IIS) / .NET Application Server must be enabled. Please see [Enable IIS on Windows 2003](#) for details.

Windows 2008 / 2008 R2 Server

.NET Framework 3.5 SP1 must be installed. The Framework can be installed with Microsoft Windows Update.

Windows XP, Windows Vista, Windows 7 (For Evaluation Only)

Internet Information Server (IIS) must be installed.

.NET Framework 3.5 must be installed. The Framework can be installed with Microsoft Windows Update.

### Supported Database Servers

SQL Server 2005

SQL Server 2008/2008 R2

Both local and remote databases are supported. Windows/Mixed Authentication Mode must be enabled. Please see [Configuring SQL For Windows/Mixed Authentication](#) for details.

SQL Server Express 2005

SQL Server Express 2008/2008 R2

SQL Server Express is supported for Evaluation purposes and Small Business licensed installations. Instructions for installing and configuring SQL Server Express can be downloaded from <http://extranet.adenin.com/extranet.aspx?bo=b6portal.wo&fn=ShowOne&t=1049998>.

See also

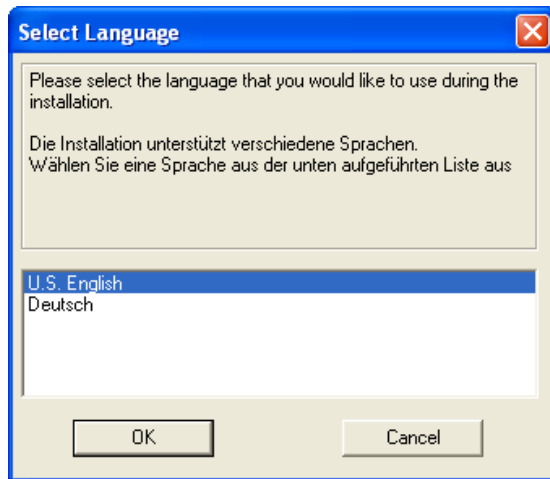
Home > Installation

## Installation

Double-click the Installer EXE file.

The Installation Wizard will guide you through setup steps.

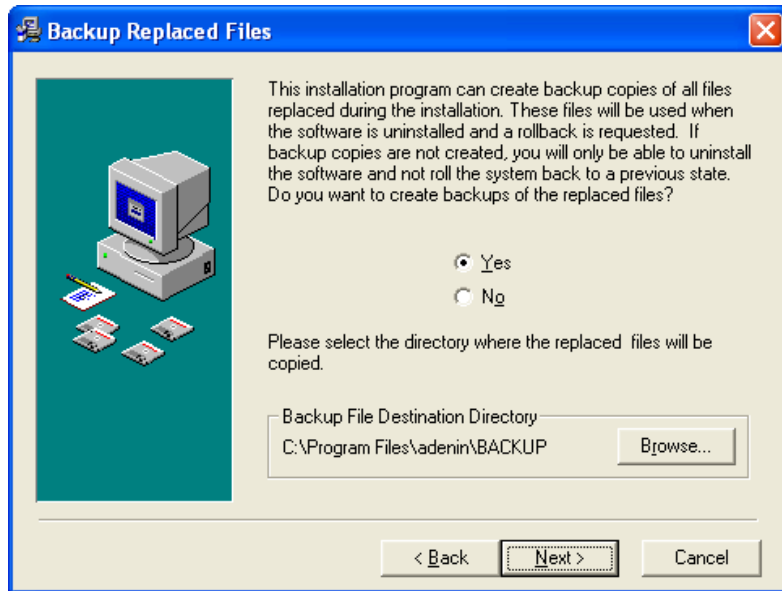
First, select the language to be used on the Demo site. Click OK.



On the following Welcome screen, click Next.

Select the Installation Location or accept the default. Click Next.

Select if you wish Backup copies of existing files to be made. Click Next.



On the Ready to Install screen, click Next.

The Installation progress will be displayed. Once completed, The Configuration Wizard will launch automatically.

### See also

- [Overview](#)
- [Before You Begin](#)
- [Configuration](#)
- [Licensing](#)
- [Additional Server Configuration](#)
- [Demo Site](#)
- [Production Site](#)
- [Getting Started](#)
- [Intranet Modeler](#)
- [Administrative Configuration](#)
- [Appendix](#)

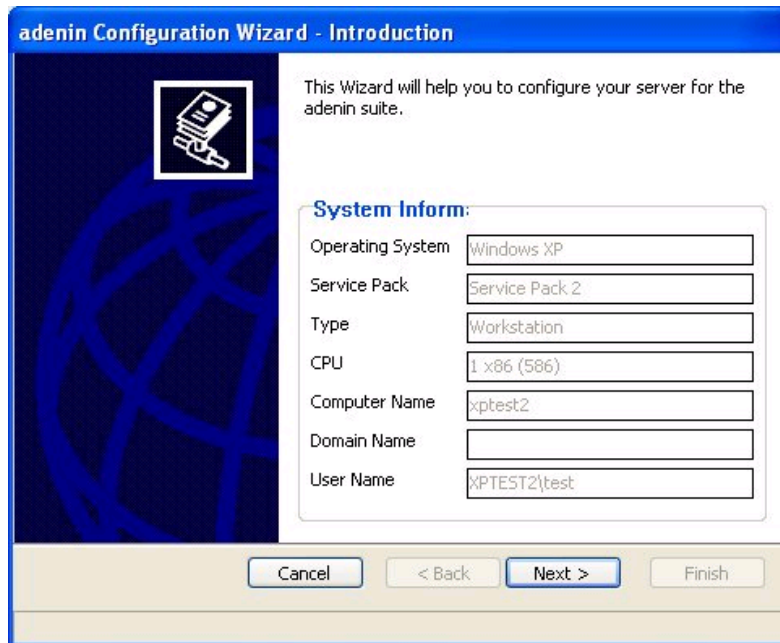
Home > Configuration

## Configuration

### Configuration Wizard

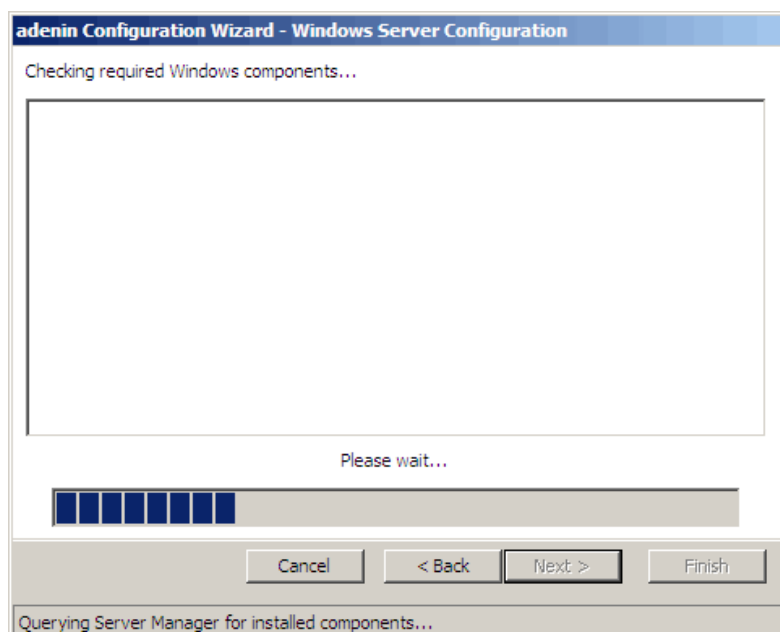
The Configuration Wizard starts after the Installation is finished. If the installation requires a reboot, the Wizard launches automatically after the reboot is completed.

On the Start page, click Next to begin.

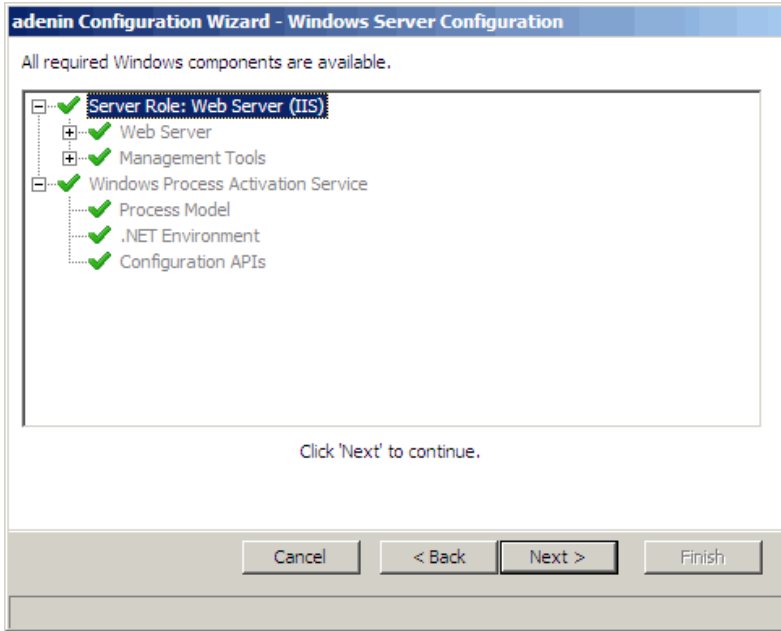


### Windows 2008/Vista/7 IIS Setup

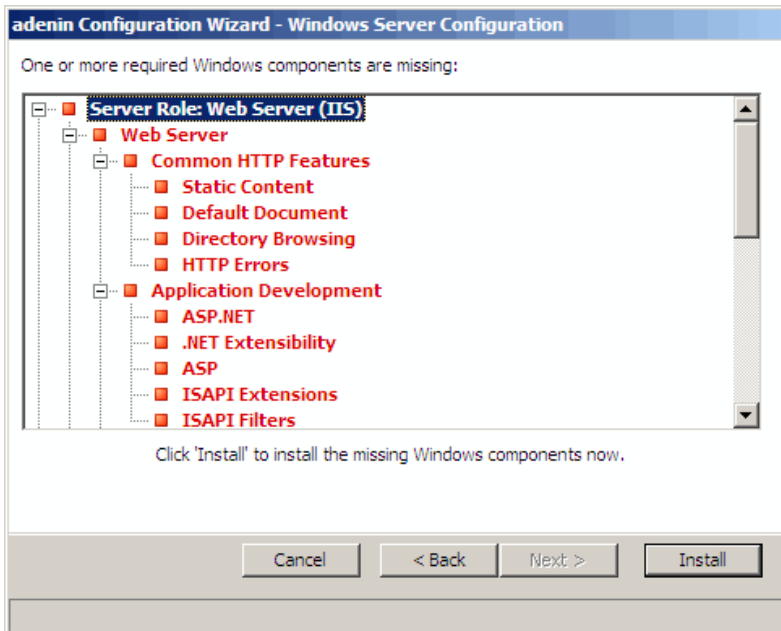
If you are running Windows 2008, Vista or 7 the installer will check for the proper installation and configuration of IIS. If you are running any other version of Windows, you will be directed straight to the Choose Destination Location dialog as the next step.



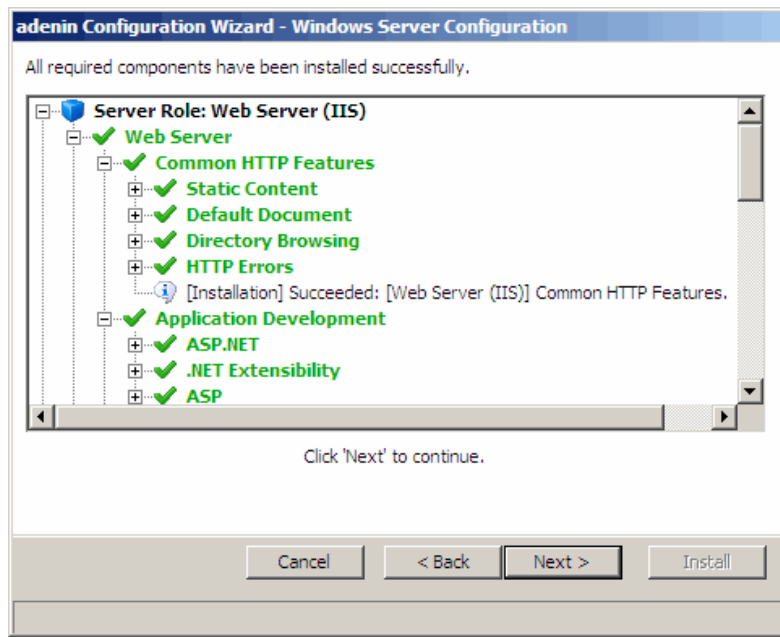
If IIS is properly installed and configured, you will see the following screen.  
Click Next to continue on to Choose Destination Location.



If IIS is not properly installed and configured, you will see the following screen.  
Click Install to set up IIS.



When IIS has been properly installed and configured, you will receive this success dialog.  
Click Next to continue.



## Select Web Site

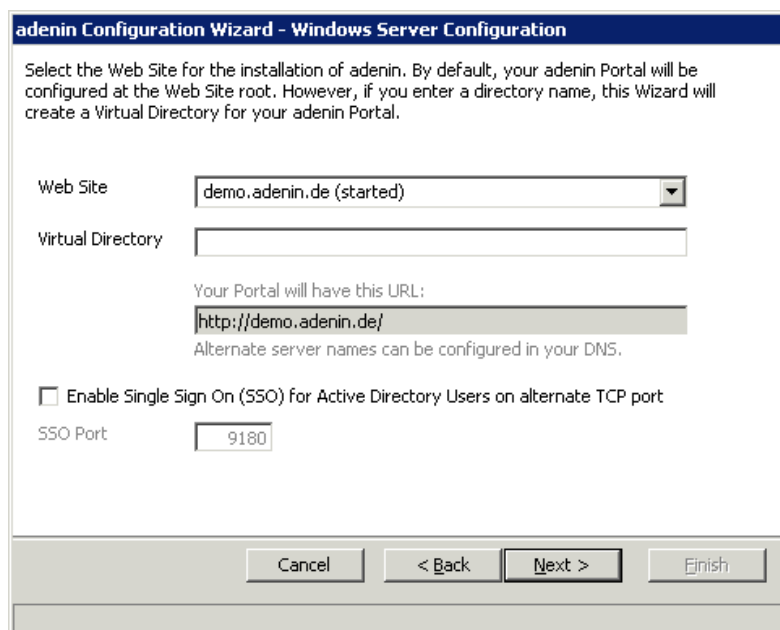
Select a Web Site for the dropdown. In most cases, you should select the Default Web Site.

By default the new web site will be created as a root web site and could be accessed at <http://hostname/>

By entering a value in the Virtual Directory field (e.g. adenin) the Configuration Wizard creates a virtual directory below the web site root, allowing you to access the intranet at e.g. <http://hostname/adenin>

Check the next check box if you wish to enable ActiveDirectory Enable Single Sign On (this setting could also be enabled after the initial installation is finished by restarting the Configuration Wizard).

Click Next.

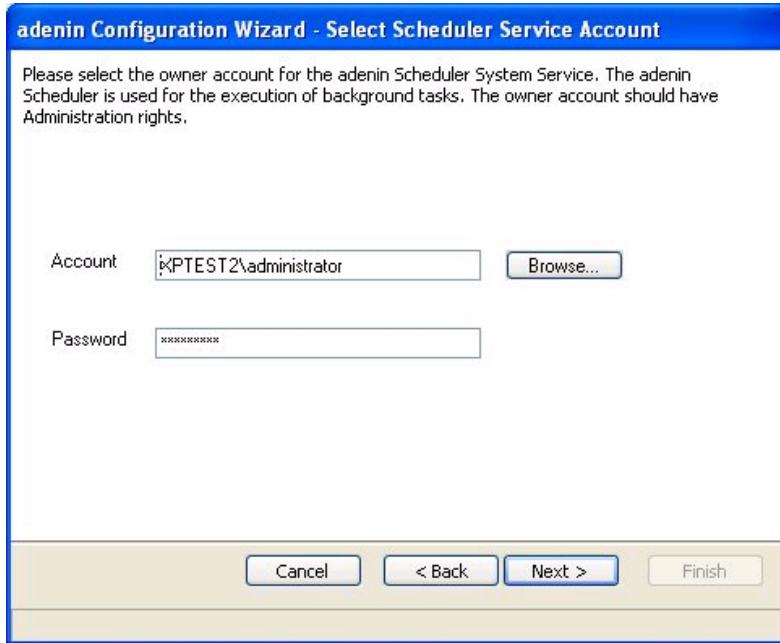


### Select Scheduler Service Account

The adenin Scheduler Service is used to execute recurring tasks in the background and requires an owner account to complete these tasks.

Enter details of an account with local administration rights. If you intend to use the Filespider feature, this account must also have access rights to the spidered drives.

Click Next to continue.



### Select Anonymous User Account

By default, the anonymous access of the adenin virtual directory security is controlled by the same account used for the adenin scheduler service. User authentication is performed against the adenin user database. NTLM or Integrated security is supported but must be configured manually.

Check the checkbox if you wish to use the same account as the Scheduler. Otherwise, enter the alternate user's criteria and click Next.

**adenin Configuration Wizard - Anonymous User Account**

Select the Windows User Account used to access this computer when an unauthenticated/anonymous user connects to the adenin site.

Same as Scheduler Account

Account: XPTEST2\administrator

Password: \*\*\*\*\*

### Select Database Server

Select the SQL server which will host the adenin database.

The default name for the adenin database is adenin. It is recommended to use the default name, unless you have unique needs. By completing this step, you will create or overwrite the adenin database.

Click Next to continue.

**adenin Configuration Wizard - Database Connection**

Specify the connection information to a MS SQL Server/MSDE:

Select or enter a SQL server name: (local)

Database name: adenin

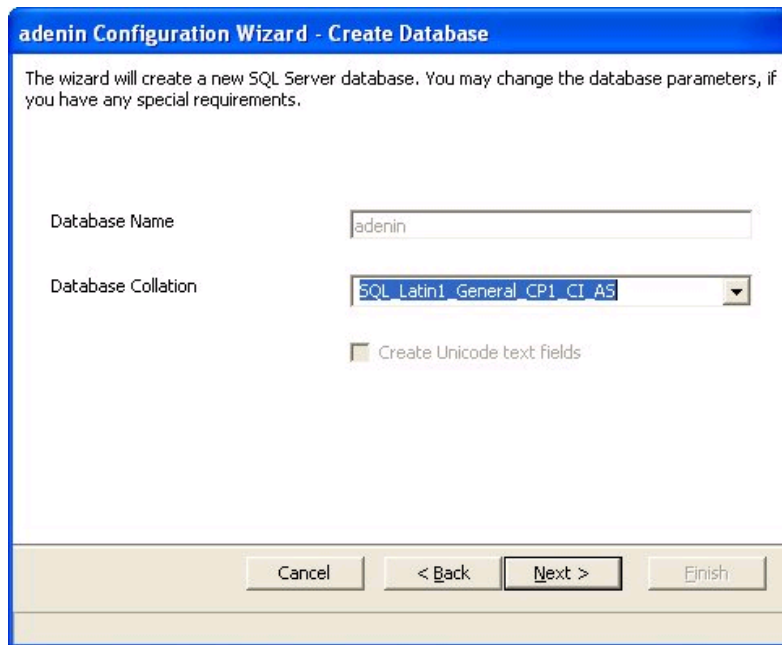
SQL server user name: sa

Password: \*\*\*\*\*

This Wizard creates the database with default settings. If you want to use a customized database (e.g. use a custom location for the database file) the database must be created before the wizard is started. Use Microsoft SQL Server Enterprise Manager (or a similar tool) to create an empty database.

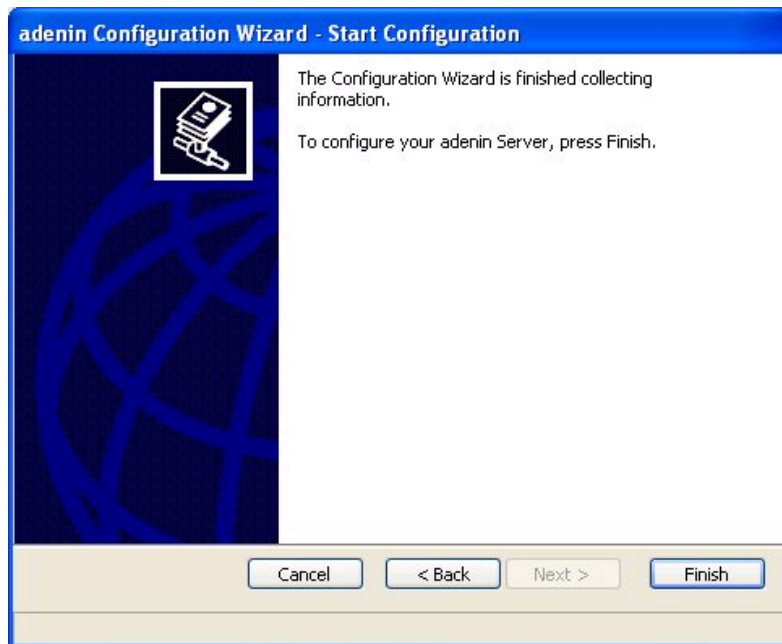
Execute the CreateDatabase.sql script from the adenin\tools directory (default C:\Program Files\adenin\tools\CreateDatabase.sql) to initialize the new database and to load meta and sample data.

Select the character set for your database, including optional Unicode support, and click Next.

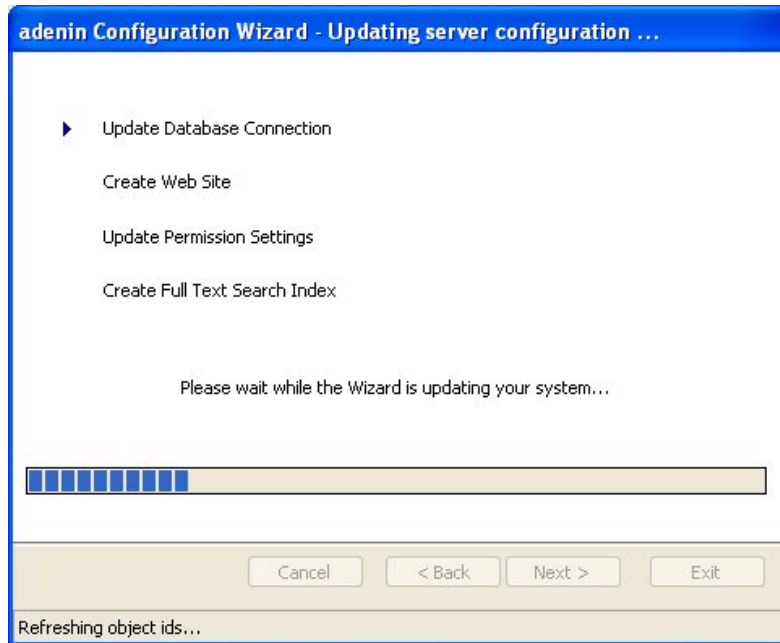


### Finish Configuration Process

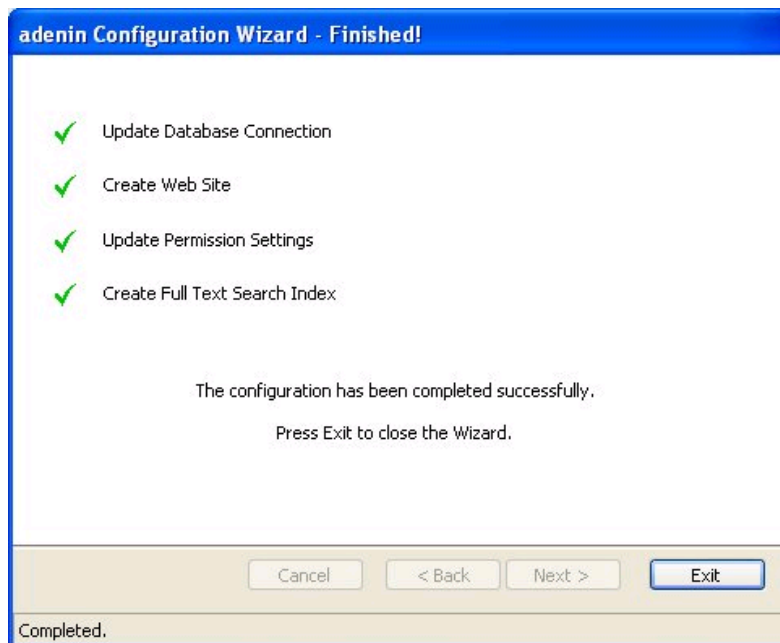
Click Finish to start the server configuration process using the setting selected through the Wizard.



The progress of your installation will be displayed.

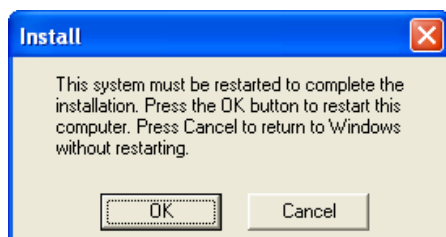


You may be asked to confirm user rights assignments during this process. Click OK to continue. The last page shows the configuration summary. Click Exit to finish.



Please contact [support@adenin.com](mailto:support@adenin.com) for assistance if any of the steps failed. A failed step will not display a green success checkmark.

After Installation and Configuration are complete, you may be prompted to restart your computer. Click OK.



After the Configuration is finished, the Wizard can be started again for any changes in the Configuration (Programs -> adenin -> Configuration Wizard).

### See also

- [Overview](#)
- [Before You Begin](#)
- [Installation](#)
- [Licensing](#)
- [Additional Server Configuration](#)
- [Demo Site](#)
- [Production Site](#)
- [Getting Started](#)
- [Intranet Modeler](#)
- [Administrative Configuration](#)
- [Appendix](#)

Home > Licensing

## Licensing

Please start the Server Health Check after the Configuration Wizard has finished to ensure the server is properly configured and to complete Licensing.

To start the Server Health Check, double-click the icon on your Desktop or select. Start > All Programs > adenin > Server Health Check.



adenin  
TECHNOLOGIES

**adenin IntelliEnterprise  
Server Health Check**

Use this page to detect and analyze potential problems on your adenin server.

[General] [Versions]

Server Id	1B3F243C213D551443161C7B1E0D020A0E14190A010806125049575C5A5715	
License	No license file found. Please click <a href="#">here</a> to request an evaluation license.	
Server Version	9.5 (Build 366, Core 090000, Inst 090000)	
DB Version	090000	
Execute Permissions	OK	
Directory Permissions	C:\Program Files\adenin\cache	OK
	C:\Program Files\adenin\content	OK
	C:\Program Files\adenin\history	OK
	C:\Program Files\adenin\portal	OK
	C:\Program Files\adenin\scripts\newsfeed	OK
	C:\Program Files\adenin\temp	OK
	C:\Program Files\adenin\usercache	OK
	C:\Program Files\adenin\web\cache	OK
	C:\Program Files\adenin\web\images	OK
	C:\Program Files\adenin\web\dm	OK
	C:\Program Files\adenin\WebMail	OK
	C:\Program Files\adenin\GridViewer\TempReports	OK
Database Connection	OK	
Web Connection	OK	
Scheduler	OK: Scheduler Service is running	
Batch Queue	OK	
Cache	OK: 2 File(s)	

Done Local intranet 100%

There are two common reasons for an Error 404 page to appear instead of the Server Health Check Results:

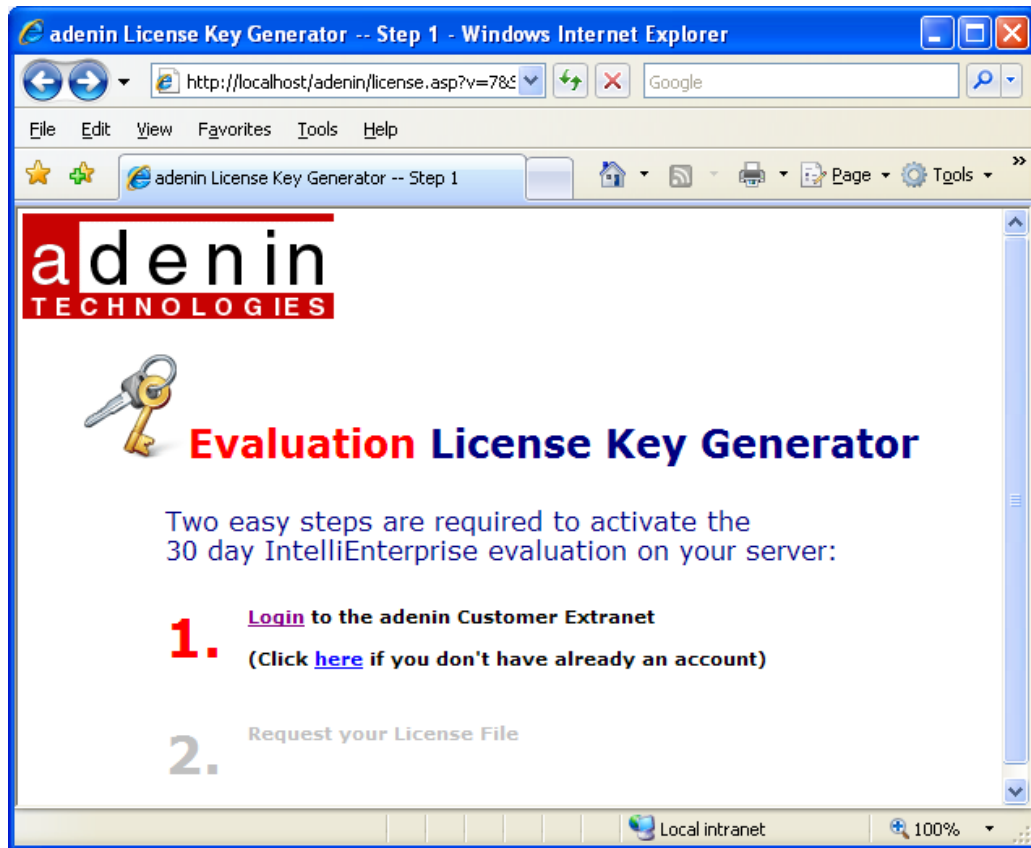
- A proxy server has been used to access web site and the proxy server cannot access the local server. In this case, enable proxy bypass for localhost (Internet Explorer -> Tools -> Internet Options -> Connections -> LAN Settings -> Bypass proxy server (sometimes localhost must also be added on Proxy Server -> Advanced...))
- A non-default web site was used. In this case replace the `http://localhost/adenin/portalcheck.asp` with `http://<your website address>/adenin/PortalCheck.asp`

The Server Health Check will show the message **No license file found. Please click here to request an evaluation license.**

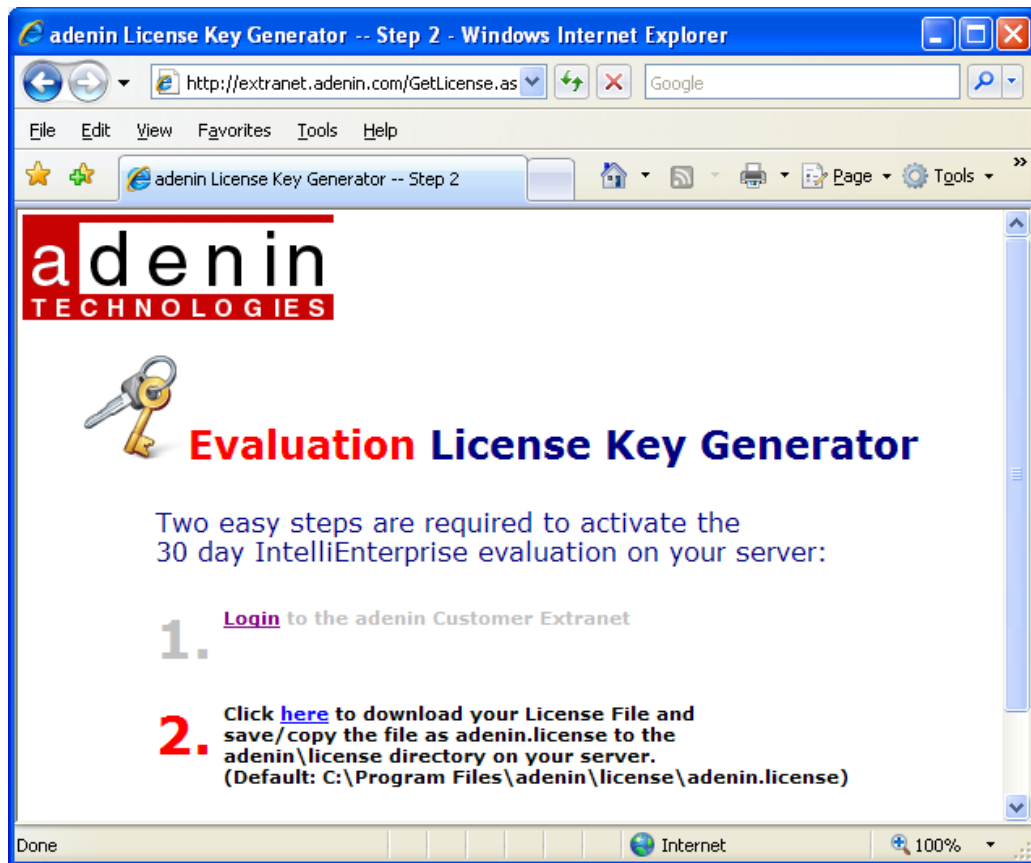
Click the [here](#) link to start the online activation

An internet connection is required the online activation. If no internet connection is available, the activation can also be done by eMail. Please copy and paste the Server Id from the adenin Server Health Check to a new eMail. Send this eMail to [sales@adenin.com](mailto:sales@adenin.com) with the subject: license request.

On the Evaluation Key Generator Page, click the [Login](#) link.

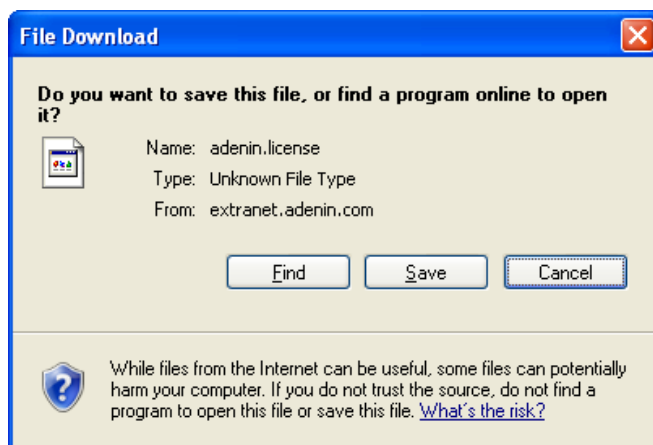


You will be redirected to the Extranet login page. Enter your credentials to login to the adenin Extranet. You will be redirected back to the Evaluation Key Generator page.



Click the [here](#) link to download the license file.

You will be prompted to download the file. Click Save.



Save the license file with the name `adenin.license` in your `adenin\license` directory (Default: `C:\Program Files\adenin\license`)

For evaluation and development purposes, IntelliEnterprise may be used directly on the server without a license file. In this mode the access is restricted to localhost (the URL must start with either with `http://localhost/...` or `http://127.0.0.1/...`)

See also

[Overview](#)

[Before You Begin](#)

Installation  
Configuration  
Additional Server Configuration  
Demo Site  
Production Site  
Getting Started  
Intranet Modeler  
Administrative Configuration  
Appendix

Home > Additional Server Configuration

## Additional Server Configuration

Depending on the features you wish to use, you may need to take additional steps to fully configure your Server.

### Install Adobe Reader

The Adobe PDF IFilter is required to allow adenin to full-text search PDF files. The IFilter si installed as part of [Adobe Reader](#).

### Install Office 2007 IFilter pack

If your organization uses Office 2007 and plans to upload files in .docx, xlsx and .pptx formats, you will need to install the [Office 2007 IFilter pack](#)

#### See also

- [Overview](#)
- [Before You Begin](#)
- [Installation](#)
- [Configuration](#)
- [Licensing](#)
- [Demo Site](#)
- [Production Site](#)
- [Getting Started](#)
- [Intranet Modeler](#)
- [Administrative Configuration](#)
- [Appendix](#)

Home > Demo Site

## Demo Site

To get an idea of the features and capabilities of adenin IntelliEnterprise, version 10 comes installed with a Demo site, containing sample data.

You can access the Demo Site via the Desktop shortcut, from Start > All Programs > adenin > Demo Site or by entering the following URL in a Web Browser <http://<<servername>>/Portal-Demo.aspx> (e.g. <http://localhost/Portal-Demo.aspx>).

If a custom Virtual Directory name was entered the Desktop shortcuts need to be adjusted to reflect the custom name. The URL of the Demo Site is <http://<<servername>>/<<virtualdirectory>>/PortalDemo.aspx> (e.g. <http://localhost/adenin/Portal-Demo.aspx>).

The initial administrative User Id for the Demo Site is **admin** and the password is also **admin**.

### See also

- [Overview](#)
- [Before You Begin](#)
- [Installation](#)
- [Configuration](#)
- [Licensing](#)
- [Additional Server Configuration](#)
- [Production Site](#)
- [Getting Started](#)
- [Intranet Modeler](#)
- [Administrative Configuration](#)
- [Appendix](#)

---

Home > Production Site

## Production Site

The Production Site is an empty Intranet site which can be used to building your own intranet portal..

All data and content created within an evaluation version will be maintained when you convert to a purchase.

You can access the Production Site via the Desktop shortcut, from Start > All Programs > adenin > Production Site or by entering the URL <http://localhost/portal.aspx> directly into your browser's Address Bar.

You can access the Production Site via the Desktop shortcut, from Start > All Programs > adenin > Production Site or by entering the following URL in a Web Browser <http://<<servername>>/> (e.g. <http://localhost/>).

If a custom Virtual Directory name was entered the Desktop shortcuts need to be adjusted to reflect the custom name. The URL of the Demo Site is <http://<<servername>>/<<virtualdirectory>>/> (e.g. <http://localhost/adenin/>).

The initial User Id for the Production Site is **admin** and the password is **admin**.

### See also

[Overview](#)

[Before You Begin](#)

[Installation](#)

[Configuration](#)

[Licensing](#)

[Additional Server Configuration](#)

[Demo Site](#)

[Getting Started](#)

[Intranet Modeler](#)

[Administrative Configuration](#)

[Appendix](#)

Home > Getting Started

## Getting Started

Once you have completed the Installation and Configuration steps in this document, you are ready to begin building your intranet.

Please visit <http://extranet.adenin.com> for resources such as the QuickStart Guide and KnowledgeBase.

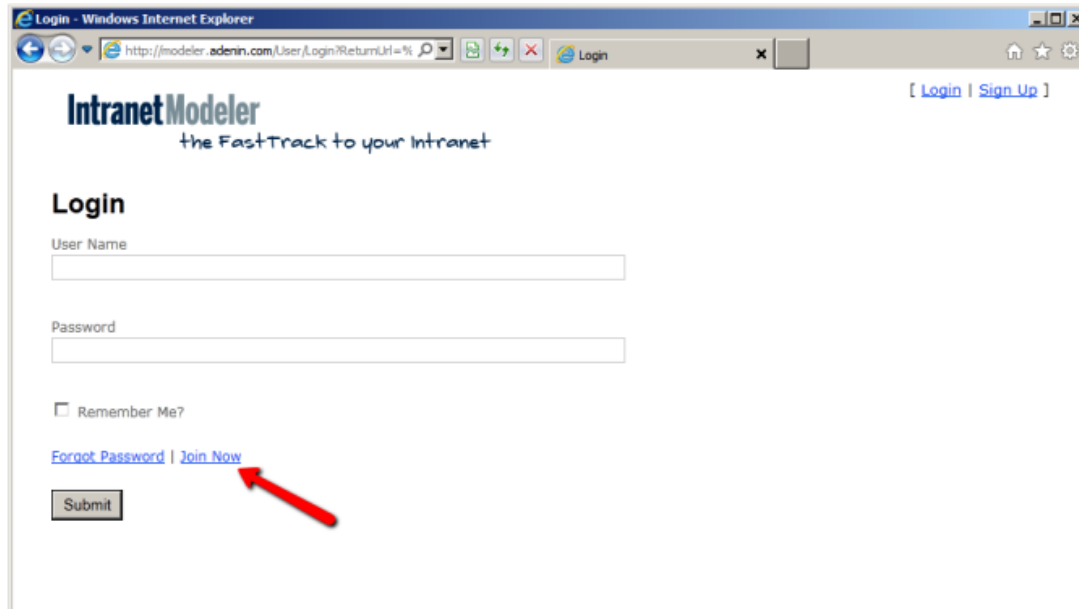
The [Intranet Modeler](#) is the fastest way to configure your own, custom Intranet. Please see the next chapter for details.

Home > Intranet Modeler

## Intranet Modeler

The adenin Intranet Modeler is a free, online modelling a prototyping tool for Intranets.

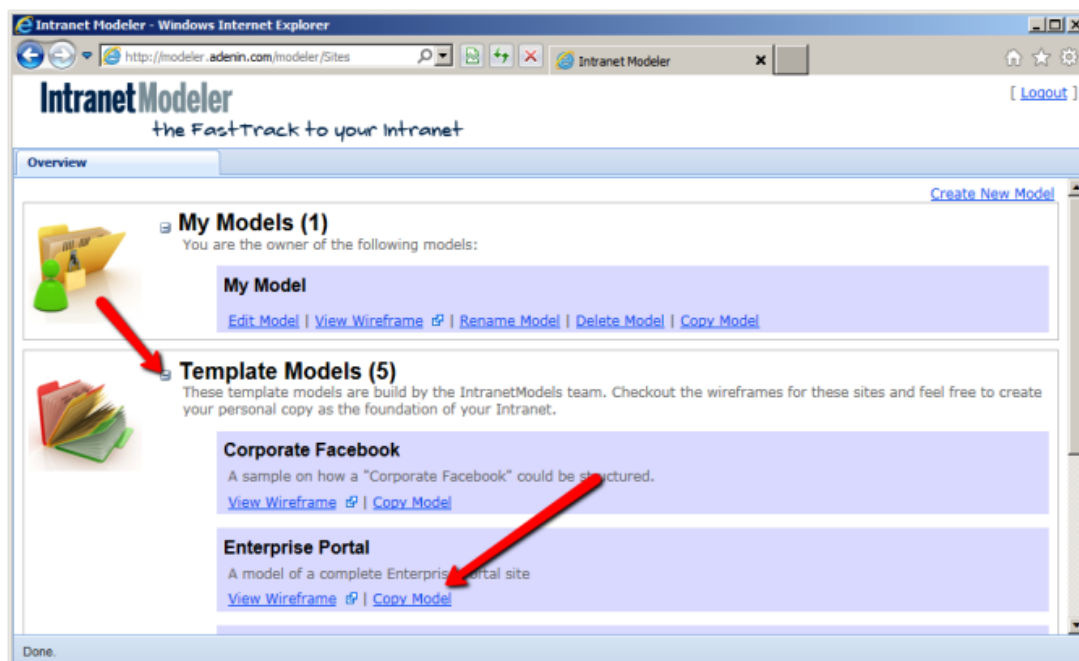
The modeler is available online at <http://modeler.adenin.com>:



Click on the Join Now link to create your own, free account if you're accessing the Modeler the first time.

## Create your own Intranet Model

The fastest way to build your own Intranet Model is to copy one of our samples models:

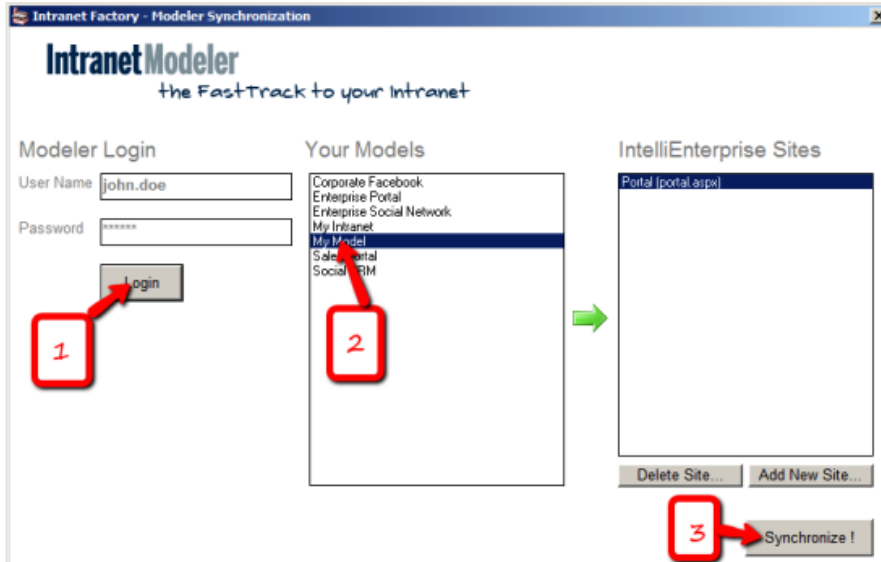


First expand the "Template Models" section by clicking on the 'plus' icon left of the section name. Then click on 'Copy Model' of the 'Enterprise Portal' model and enter the 'My Model' as the name of the copied model.

You can now click on 'Edit Model' to modify the model to fit to your needs.

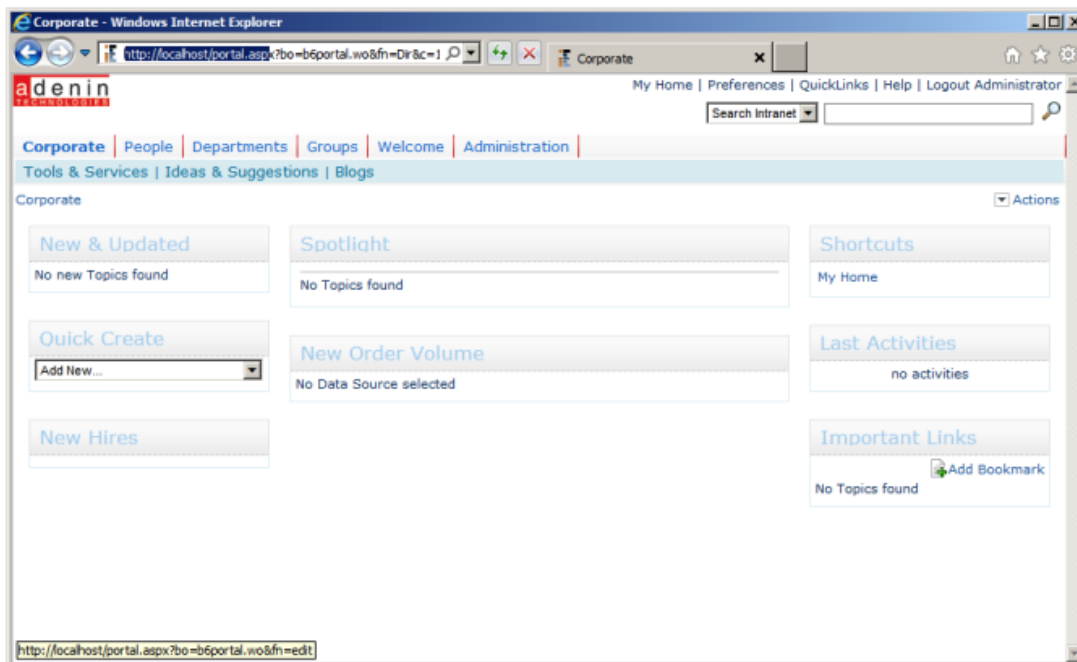
## Generate the Model on your IntelliEnterprise server

Click on Start -> All Programs -> adenin -> Intranet Factory on your IntelliEnterprise server:



1. Enter your Modeler.adenin.com user name and password
2. Select the one of the Models
3. Click on Synchronize

After clicking on the synchronize the Intranet Factory will automatically generate your Intranet on your server. After the synchronization is finished you'll find a complete Intranet site on your server:



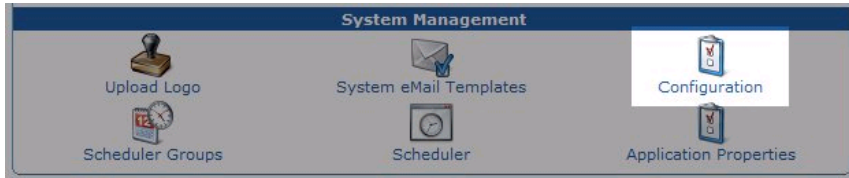
To finalize the deployment you only need to add your content to your Intranet site.

Home > Administrative Configuration

## Administrative Configuration

Before you begin to work with your new intranet, you will need to set up the Administrative Configuration.

Log in to your Production Site.  
 Click the Administration portal tab.  
 Click the Configuration icon.



You will now be viewing the Configuration page

adenin TECHNOLOGIES
My Intranet | Preferences | QuickLinks | Help | Logout Amy E Hawthorne

Corporate | Departments | Portals | Groups | **Administration**

Reporting | Link Checkers | Poll Administration | test | Default User Profiles

### Configuration

Configuration
Section
Level

#### Global Settings

<b>Fixed Style</b>	<input type="text" value=""/>	This option allows to select a fixed style for all users and disables the style selection from the user preferences pages.
<b>Layout Mode</b>	<input type="radio"/> Application Layout (Outlook Style) <input checked="" type="radio"/> Portal Layout	This property allows to switch the layout mode between the Application Layout (DynamicIntranet, Outlook Style) and the Portal Layout (IntelliEnterprise). You must close the web browser and login in again to activate a change of the Layout Mode.
<b>Text for My Home Link</b>	<input type="text" value="My Intranet"/>	The settings allows to override the name of the My Home. This can be used for the branding of the Intranet.
<b>Portal Hostpath*</b>	<input type="text" value="http://demo.adenin.com"/>	portal hostpath (used in mail notifications) e.g http://servername/adenin
<b>Portal Startpage*</b>	<input type="text" value="toaster2_en.asp"/>	e.g portal.asp
<b>Everyone Role</b>	<input type="text" value=""/>	All new users will be added to this role automatically.

#### Security Policy

<b>Complex Passwords Required</b>	<input type="text" value="No"/>	If checked the password may not be similar to the first name or last name or display name or email address (default: No)
<b>Maximum Password age in Days</b>	<input type="text" value="0"/>	Maximum Password age in Days. If a password becomes older a change of the password is forced at time of the next login of the user. (0 = never force a password change) (default: 0)

At a minimum, you should enter your Mail Server settings at this time.

Click the Save icon to commit your changes.

See also

- [Overview](#)
- [Before You Begin](#)
- [Installation](#)
- [Configuration](#)
- [Licensing](#)
- [Additional Server Configuration](#)
- [Demo Site](#)
- [Production Site](#)
- [Getting Started](#)
- [Intranet Modeler](#)
- [Appendix](#)

Home > Appendix

## Appendix



Enable IIS on  
Windows 2003



Configuring SQL  
For  
Windows/Mixed

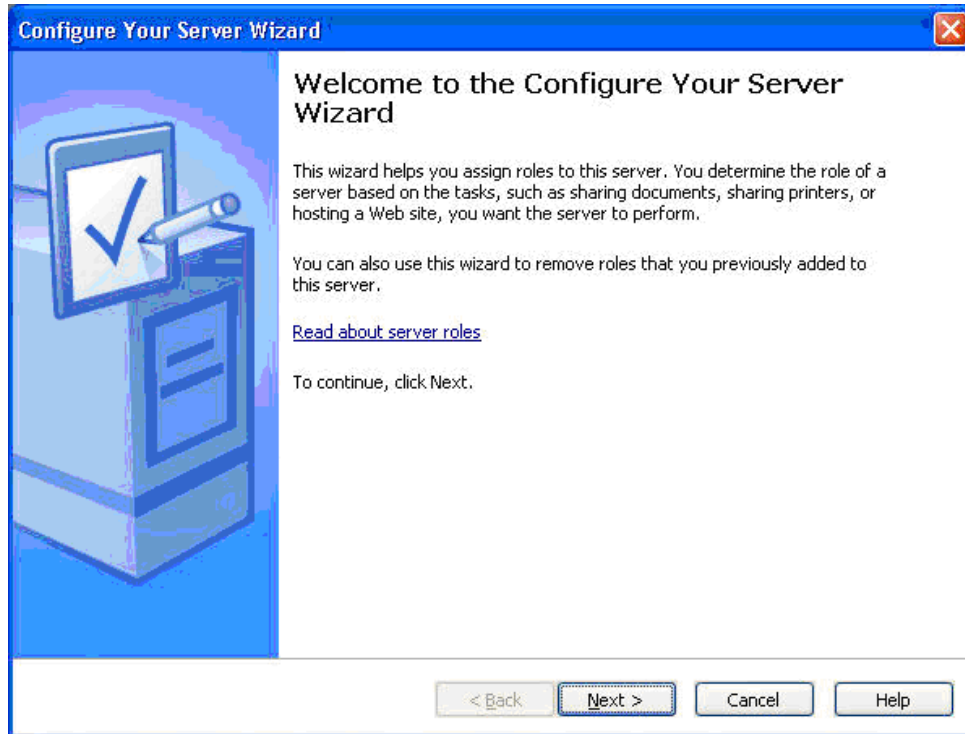
Home > Appendix > Enable IIS on Windows 2003

## Enable IIS on Windows 2003

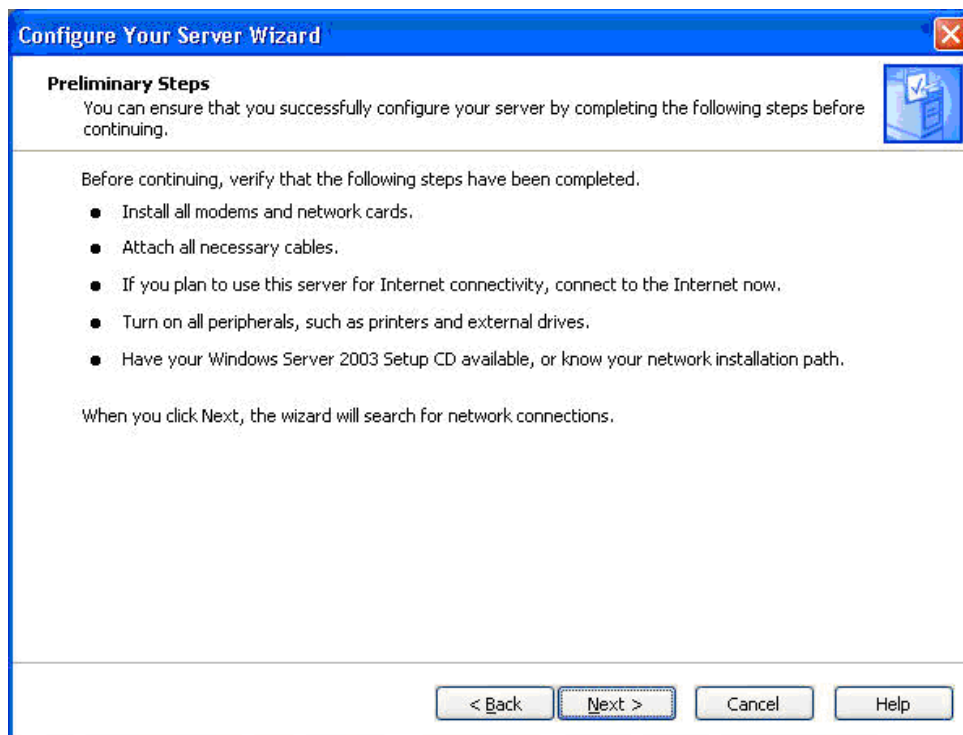
On Windows 2003 the Internet Information Server (IIS) is not installed by default.

To enable/install IIS on Windows 2003 go to Start > Programs > Administrative Tools > Configure Your Server Wizard

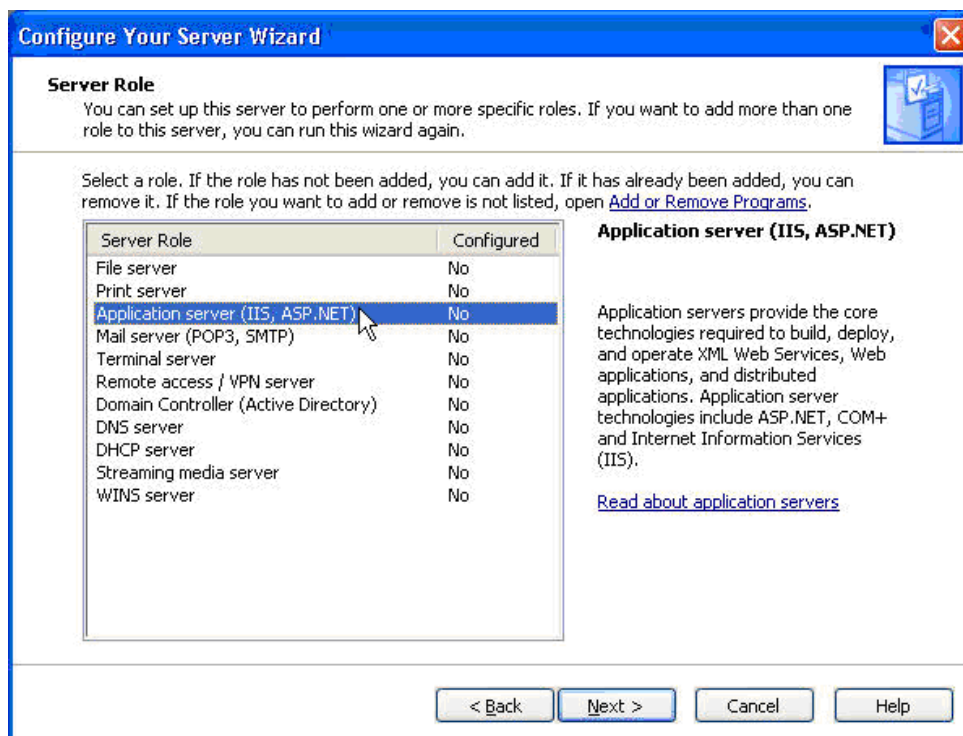
From the start page, click Next.



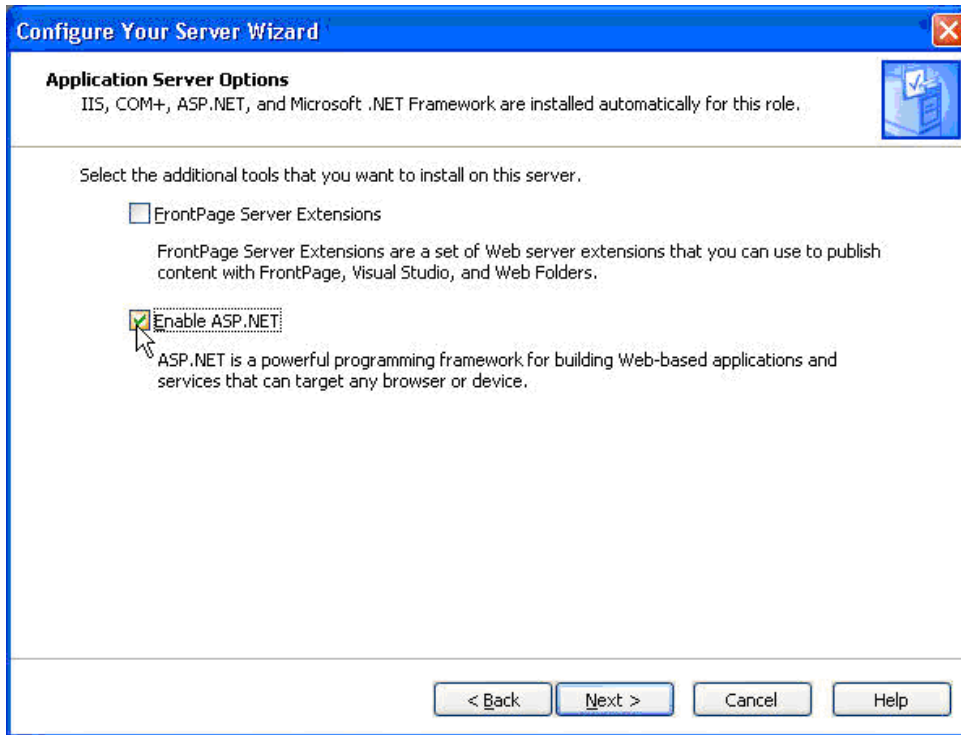
Click Next to begin the wizard.



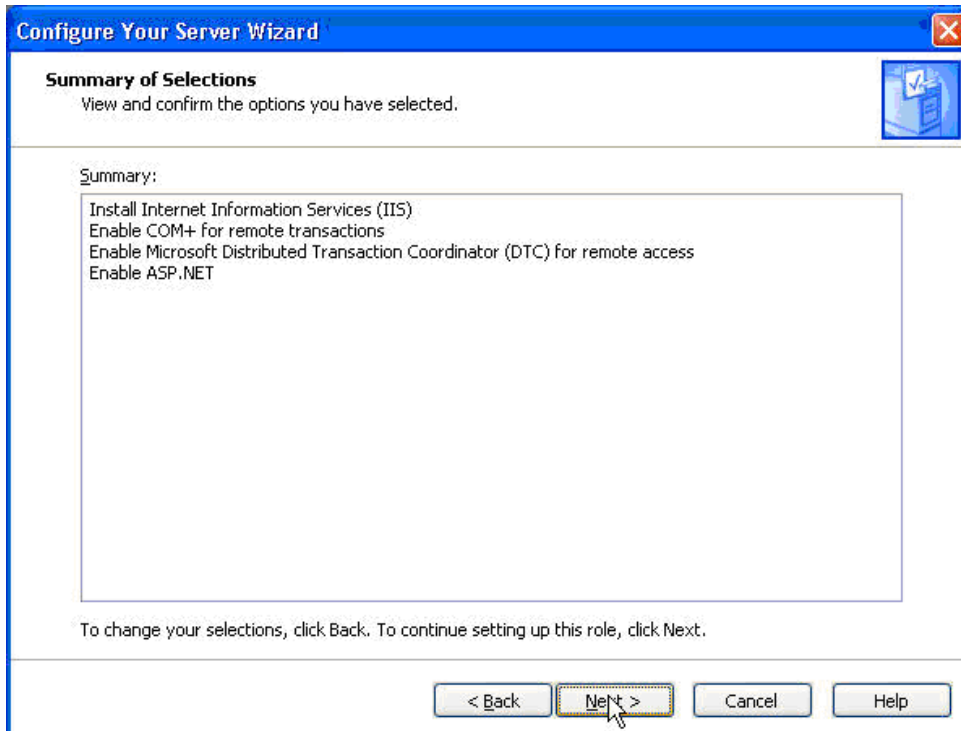
Select Application server (IIS, ASP.NET) and click Next



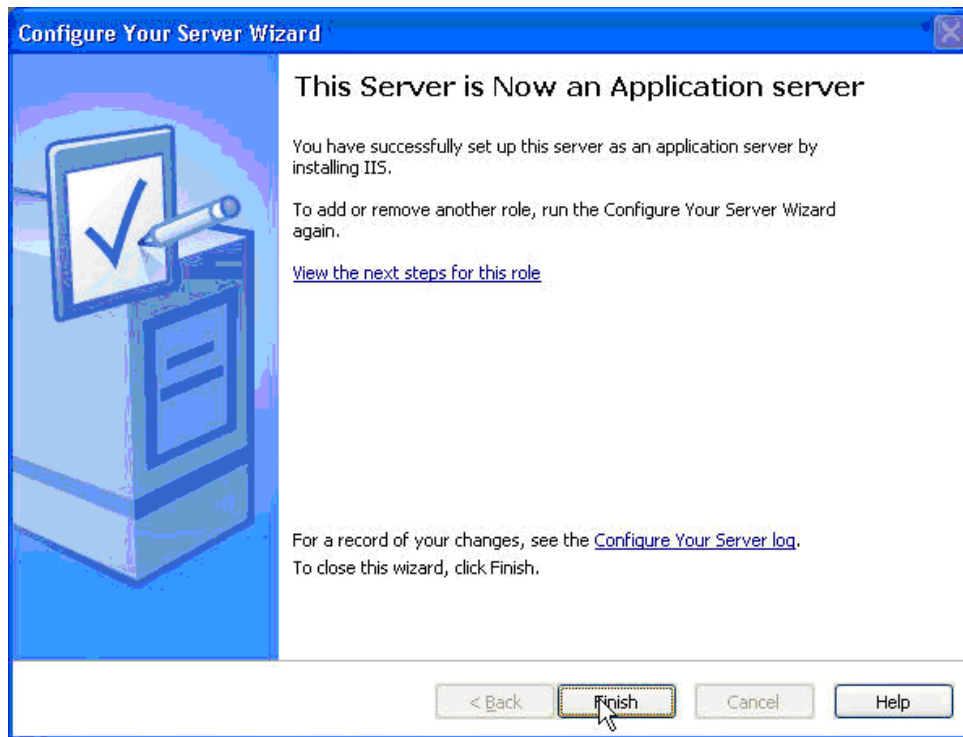
Check Enable ASP.NET then click Next.



Click Next



The Wizard will complete installation.  
Click Finish to complete Installation.

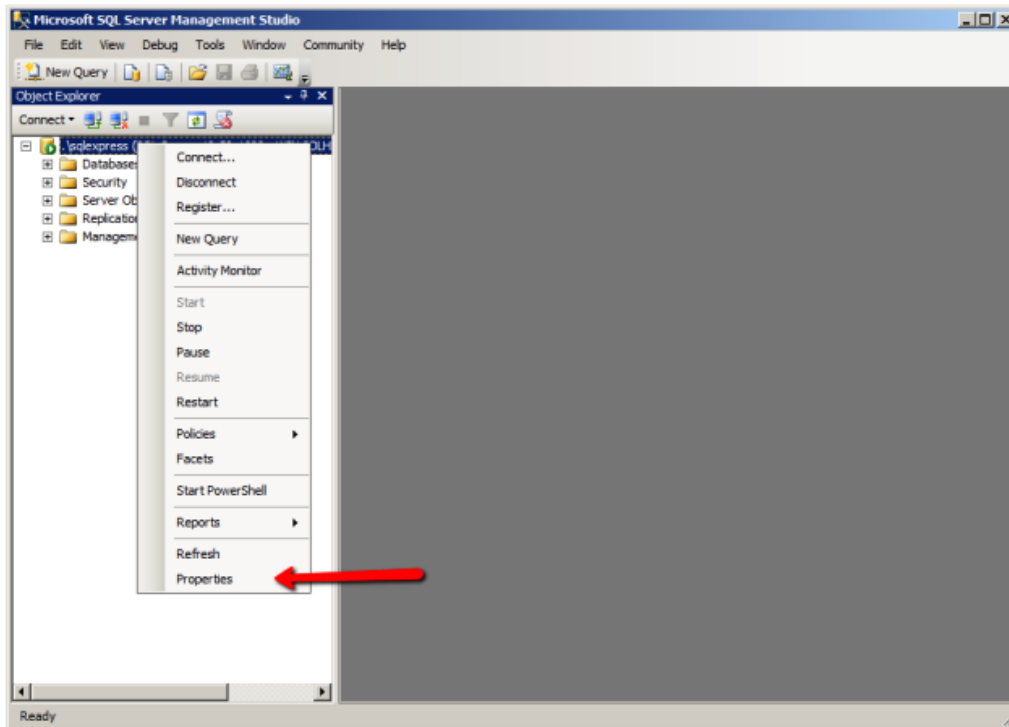


Home > Appendix > Configuring SQL For Windows/Mixed Authentication

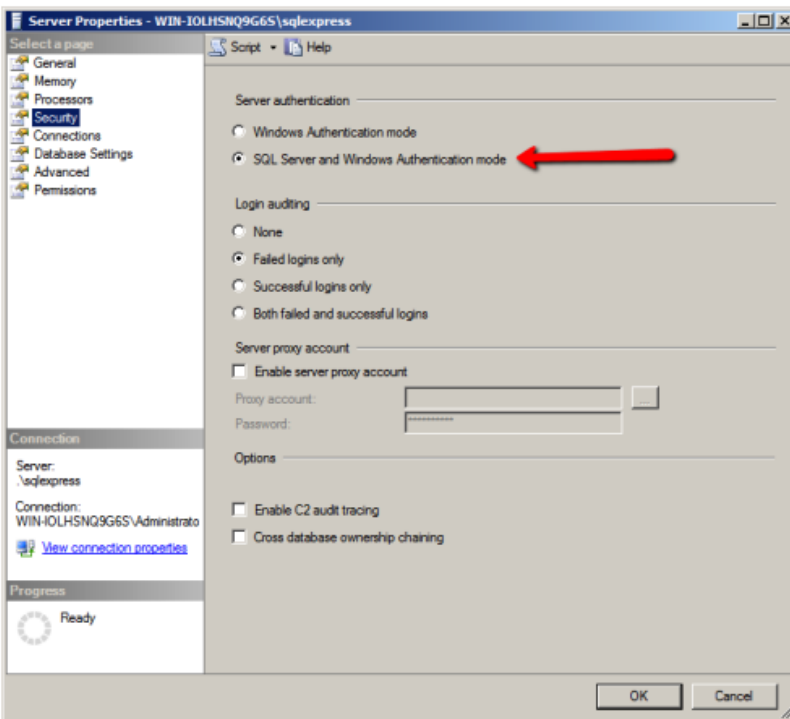
## Configuring SQL For Windows/Mixed Authentication

The adenin server requires an SQL Server 2005 (or later) running in Mixed authentication mode (also called "SQL Server and Windows").

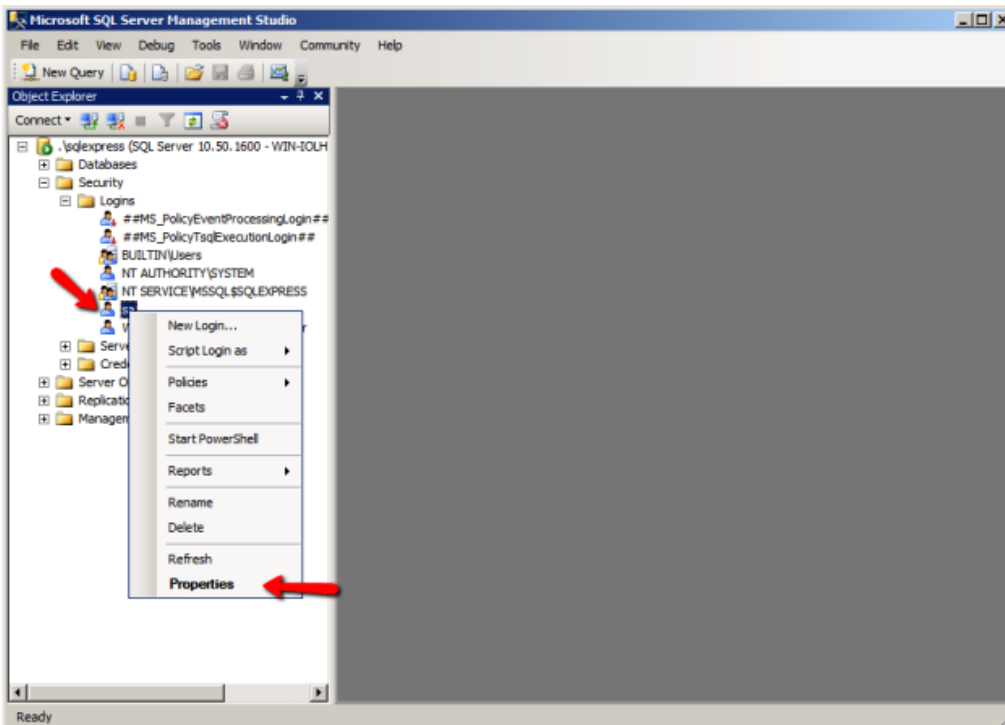
To check and/or change the authentication settings, start the SQL Server Management Studio, right click on the server name, and select Properties:



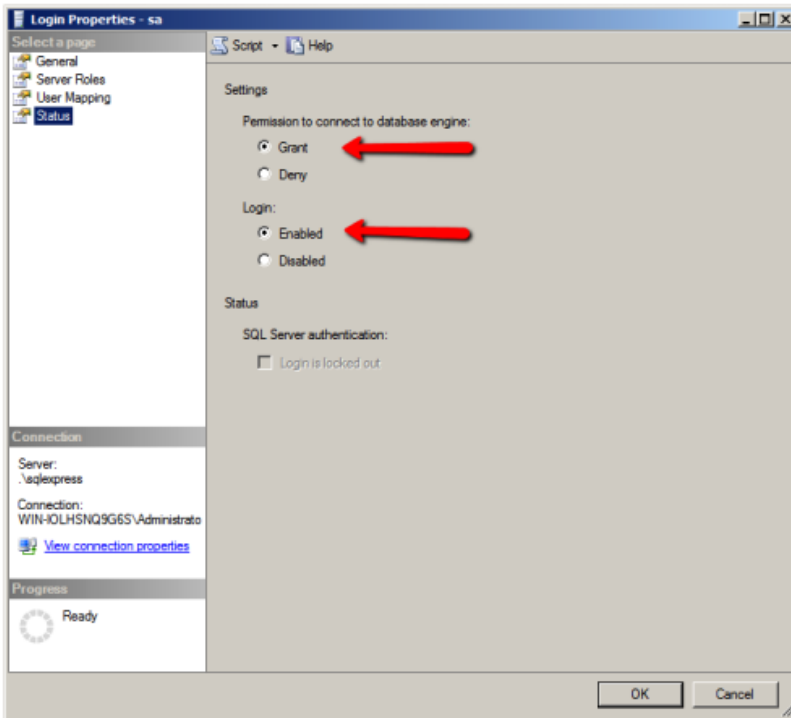
On the property page select the Security and ensure that SQL Server and Windows authentication is selected.



If the SQL Server and Windows Authentication mode was not selected a password must be assigned to the "sa" account (System Administration account). Open Security -> Logins and right click on sa:



On the Status page the following options need to be selected:



On the General Page a password must be assigned:

