



# Installation Guide

Created: Sunday, March 15, 2009



# Table of Contents

<b>1 Overview</b>	<b>1</b>
<b>2 Before You Begin</b>	<b>2</b>
System Configuration	3
Installing SQL Server Express 2008	4
Configuring SQL For Windows/Mixed Authentication	22
<b>3 Installation</b>	<b>24</b>
<b>4 Configuration</b>	<b>26</b>
<b>5 Licensing</b>	<b>34</b>
<b>6 Additional Server Configuration</b>	<b>38</b>
<b>7 Demo Site</b>	<b>39</b>
<b>8 Production Site</b>	<b>40</b>
<b>9 Administrative Configuration</b>	<b>41</b>
<b>10 Get Started</b>	<b>42</b>
<b>11 Appendix</b>	<b>43</b>
Enable IIS on Windows 2003	44

[Home](#) > [Overview](#)

## Overview

Welcome to the adenin TECHNOLOGIES IntelliEnterprise Installation Guide. Please be sure to follow all instructions carefully to create a properly installed and licensed system.

Installation should take no more than 30 minutes on a properly configured system. Please allow additional time if you need to configure your server or database.

### See also

[Before You Begin](#)

[Installation](#)

[Configuration](#)

[Licensing](#)

[Additional Server Configuration](#)

[Demo Site](#)

[Production Site](#)

[Administrative Configuration](#)

[Get Started](#)

[Appendix](#)

[Home](#) > [Before You Begin](#)

## Before You Begin

Please review the following System Configuration Requirements before installing IntelliEnterprise.

[System Configuration](#)

[Installing SQL Server Express 2008](#)

[Configuring SQL For Windows/Mixed Authentication](#)

### See also

[Overview](#)

[Installation](#)

[Configuration](#)

[Licensing](#)

[Additional Server Configuration](#)

[Demo Site](#)

[Production Site](#)

[Administrative Configuration](#)

[Get Started](#)

[Appendix](#)

Home > Before You Begin > System Configuration

# System Configuration

adenin IntelliEnterprise Release 9 (including 9.0, 9.5 and 9.6) should be installed on a Windows Server Platform, using IIS and Microsoft SQL Server.

Evaluations may be performed on a Windows XP or Vista machine, running Microsoft SQL Server Express.

## Supported Servers

Windows 2000 Server

Service Pack 4 (or later) is required

.NET Framework 3.5 SP1 must be installed. The Framework can be installed with Microsoft Windows Update.

Windows 2003 Server

Internet Information Server (IIS) / .NET Application Server must be enabled

Windows 2008 Server

.NET Framework 3.5 SP1 must be installed. The Framework can be installed with Microsoft Windows Update.

Windows XP or Windows Vista (For Evaluation Only)

Internet Information Server (IIS) must be installed.

.NET Framework 3.5 must be installed. The Framework can be installed with Microsoft Windows Update.

## Supported Database Servers

SQL Server 2000

SQL Server 2005

SQL Server 2008

Both local and remote databases are supported.

Windows/Mixed Authentication Mode must be enabled.

SQL Server Express 2005

SQL Server Express 2008

SQL Server Express is supported for Evaluation purposes and Small Business licensed installations. Instructions for installing and configuring SQL Server Express are included in this document.

See also

[Installing SQL Server Express 2008](#)

[Configuring SQL For Windows/Mixed Authentication](#)

Home > Before You Begin > Installing SQL Server Express 2008

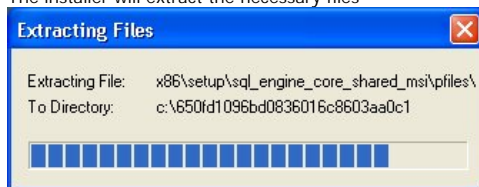
## Installing SQL Server Express 2008

### Download SQL Server Express 2008 Installer

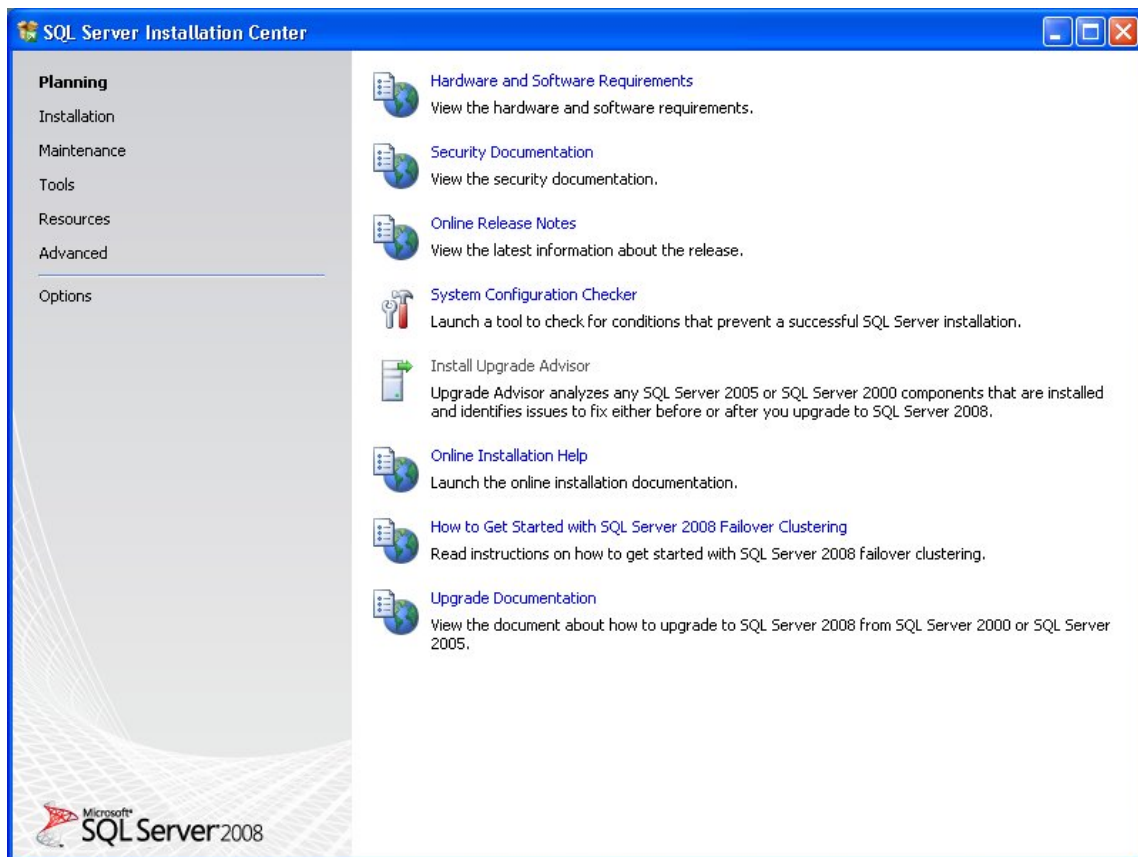
Visit the [SQL Server Express Home Page](#) and download SQL Server Express 2008 With Tools.

### Run Installer and Begin Installation Process

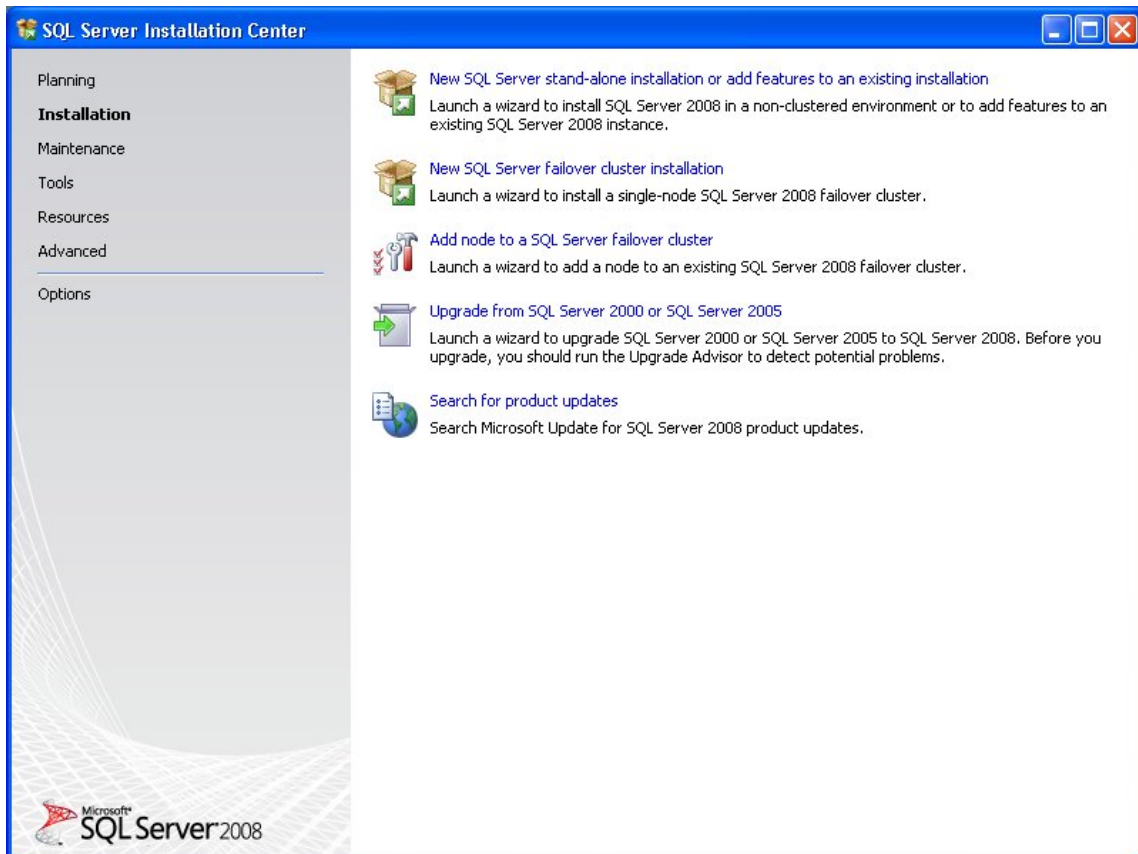
1. Double-click the .exe file downloaded in the previous step.
2. The installer will extract the necessary files



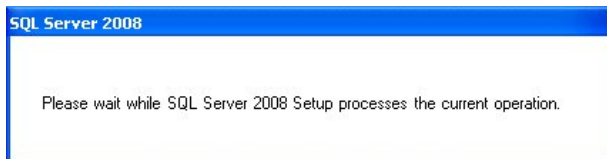
then open the Installation Center Window



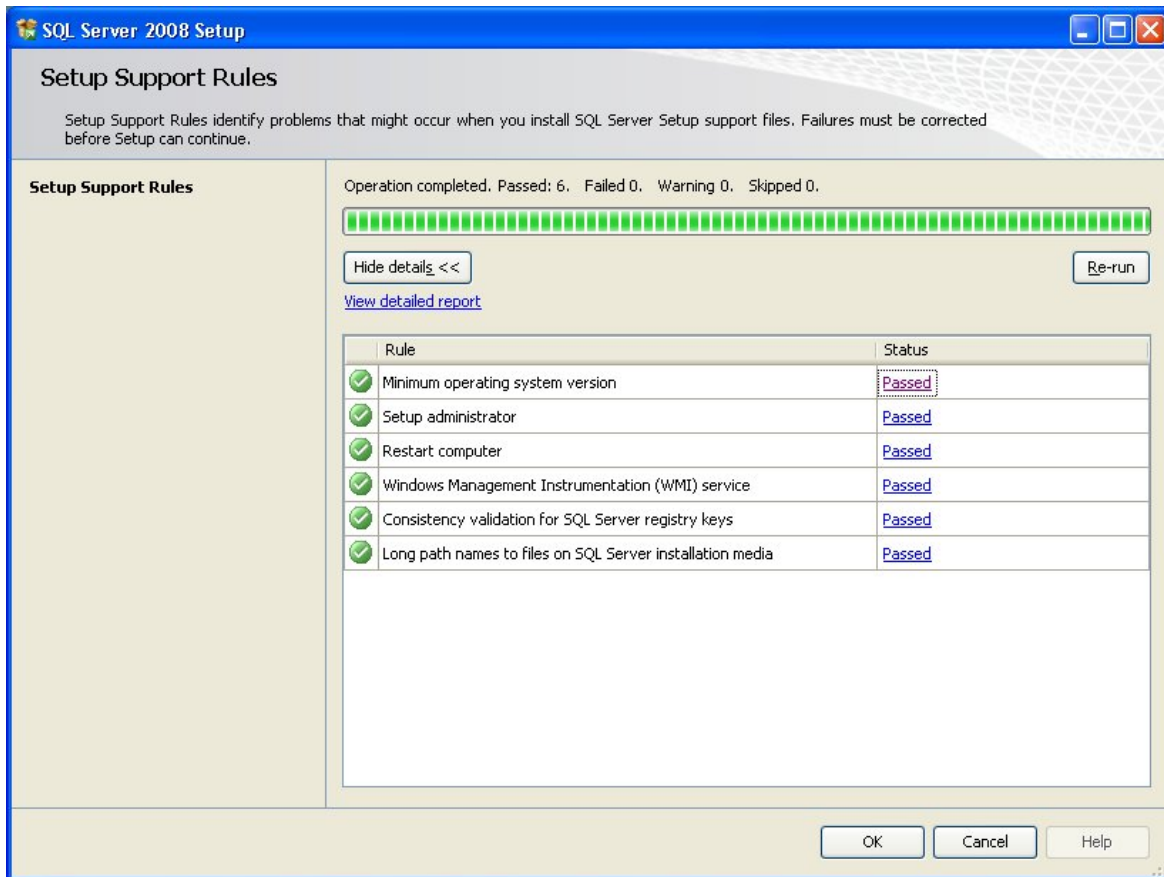
3. From the menu at the left side of the Installation Center, click Installation.



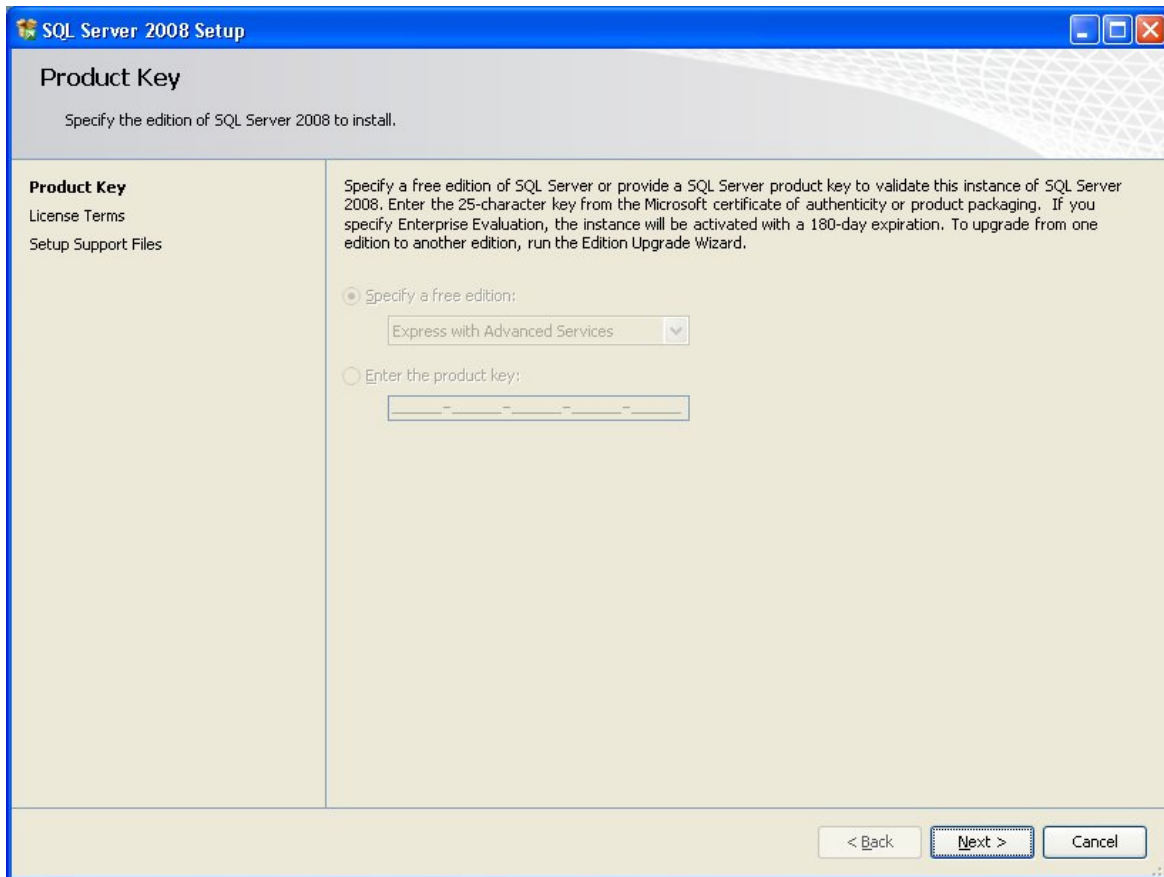
4. From the main window area, select New SQL Server stand-alone installation or add features to an existing installation. The following message will be displayed



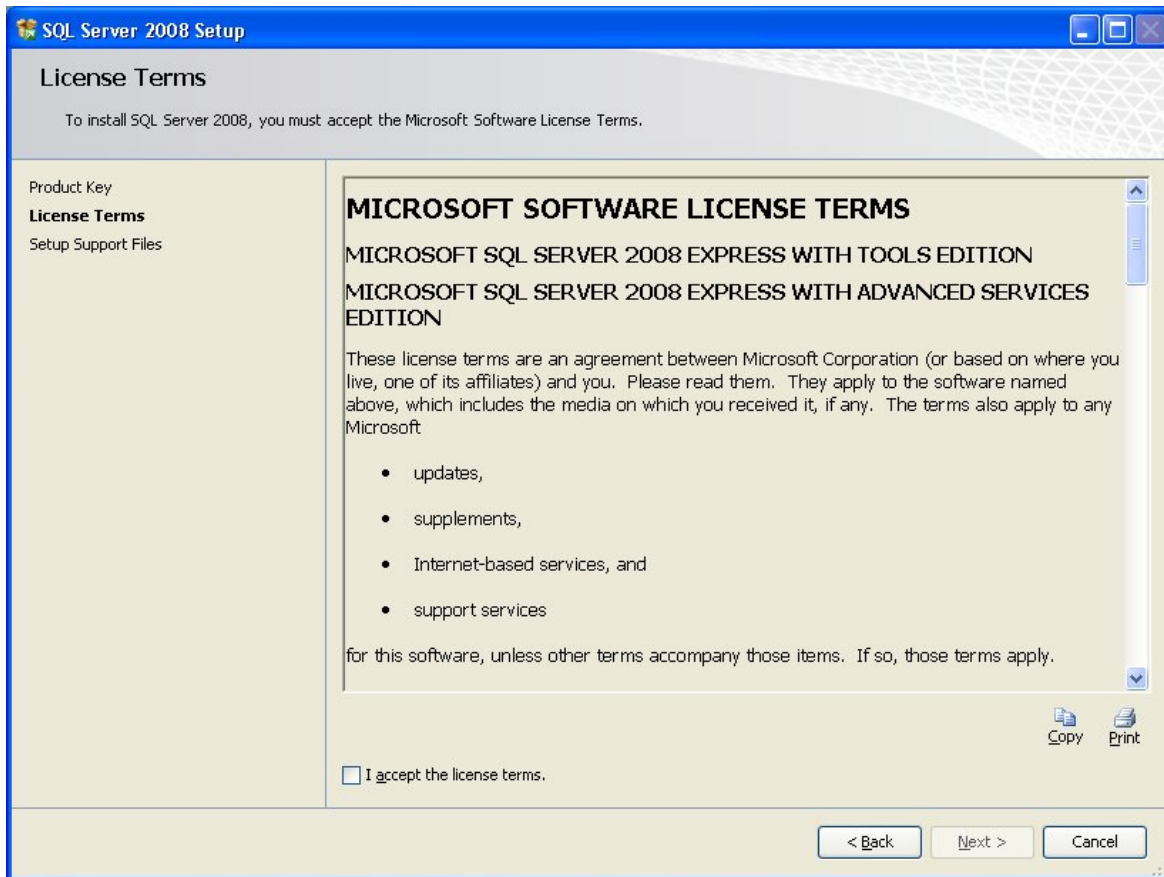
5. The Setup Support Rules page will be displayed. If your system does not meet the Setup Support requirements, you may not be able to install SQL Server 2008 on this machine or you may need to make changes to the system setup and/or installed programs.



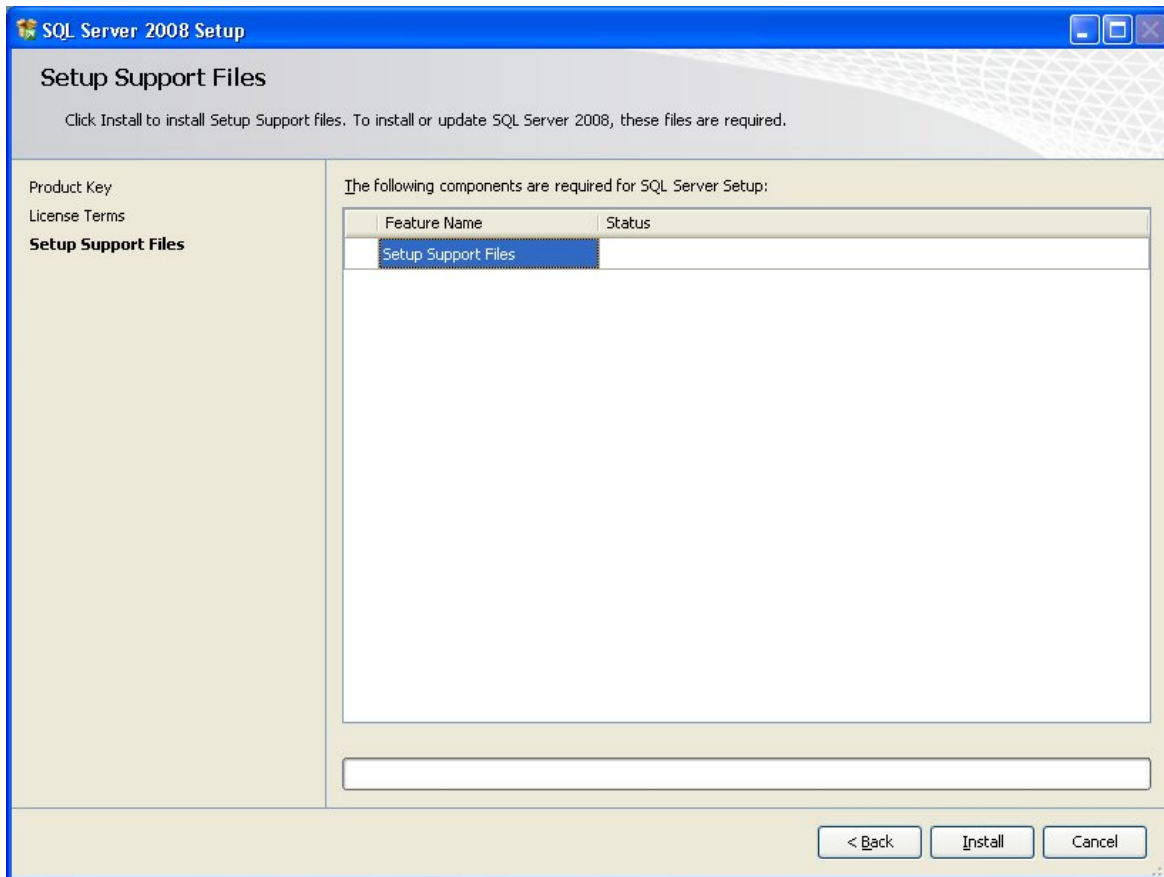
6. If all Rules have Passed, click OK to continue.
7. The Product Key window will be displayed. Because you are installing SQL Server Express Edition, this information has been entered for you and you may not edit it. Click Next to continue.



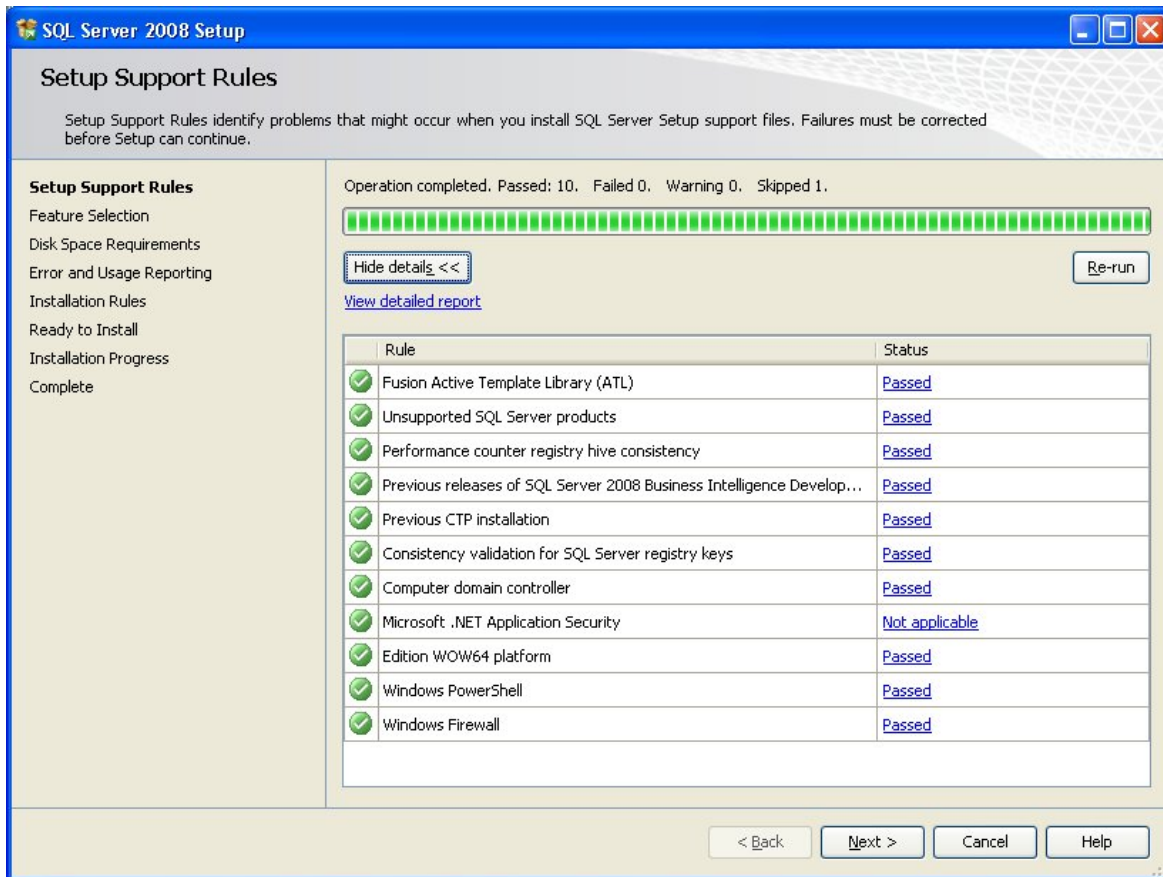
8. The License Terms window will be displayed. Review the License agreement, then click the I agree checkbox. Click Next to continue.



9. The Setup Support Files window will be displayed. Select the line item Setup Support Files and click Install.

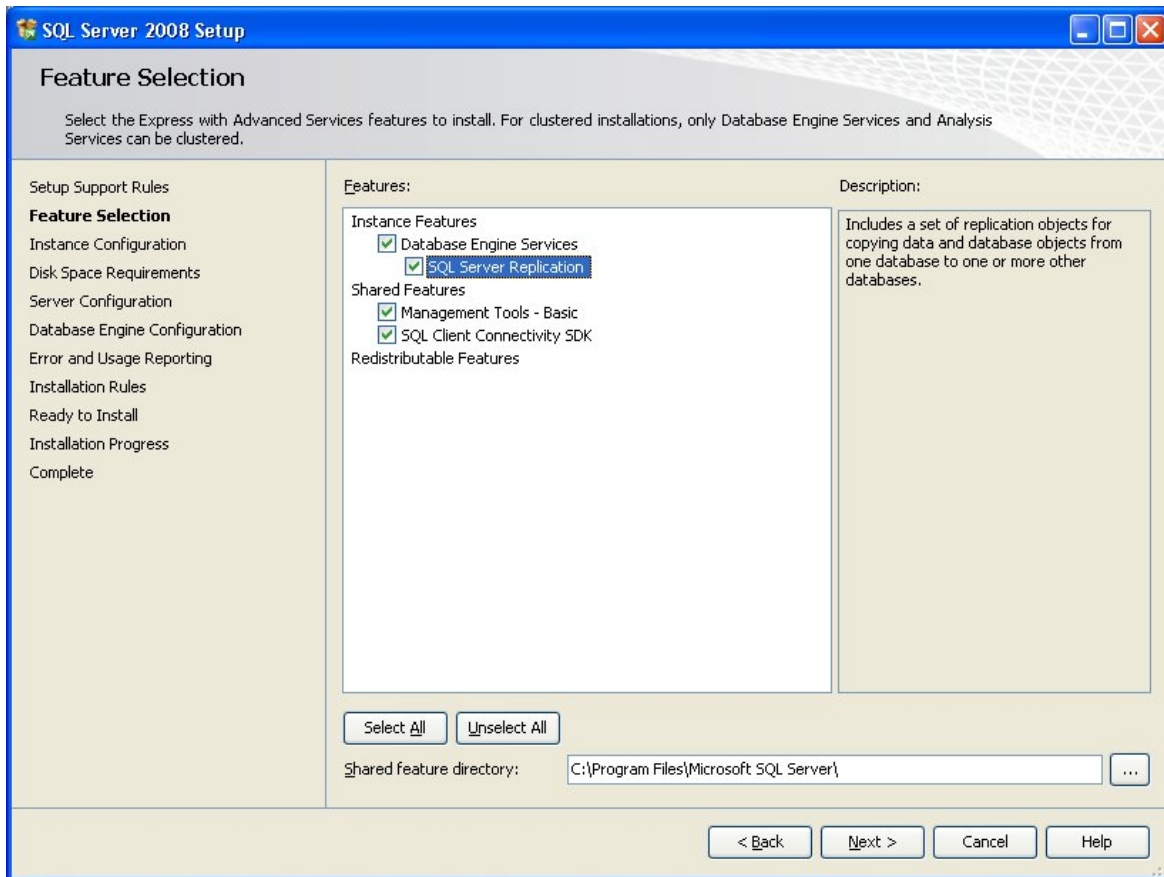


10. The Setup Support Files window will be displayed. If any tests have Failed, you may need to install additional components and restart the installation process.

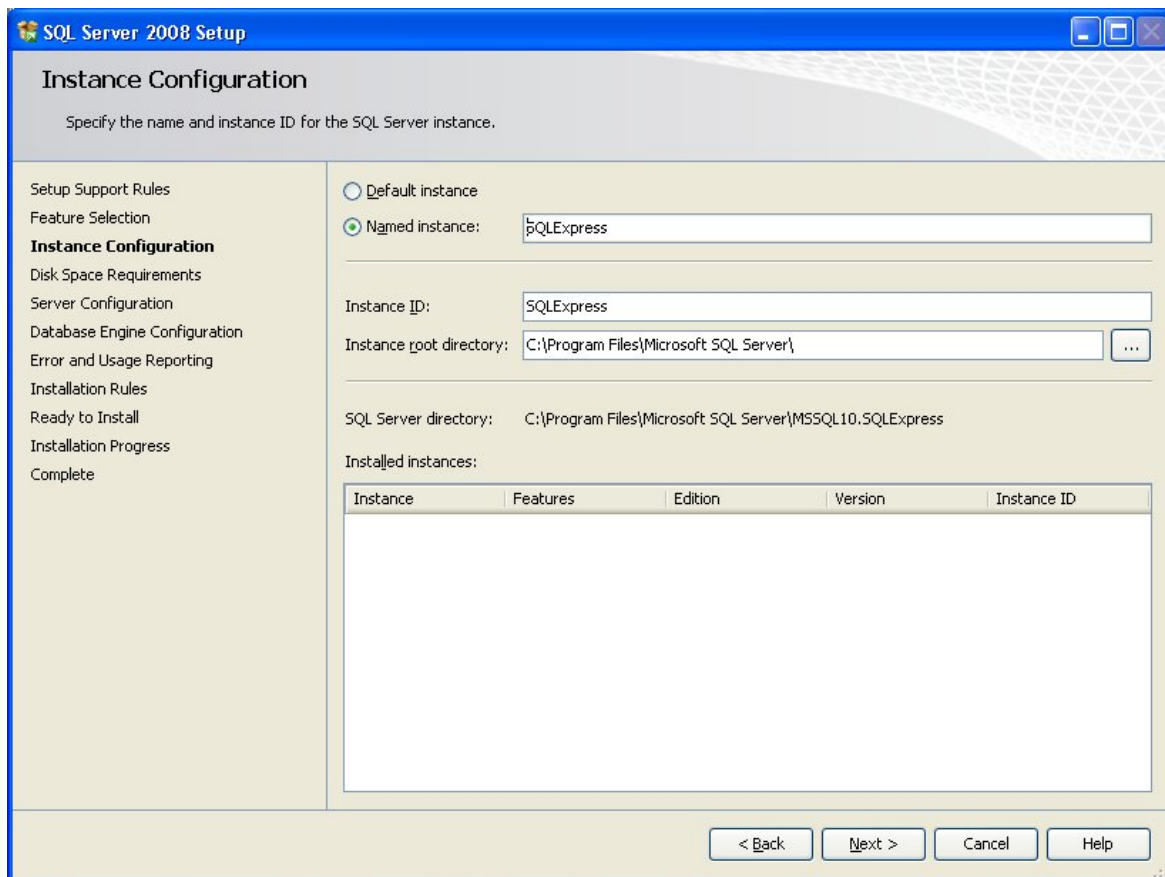


11. Click Next to continue.

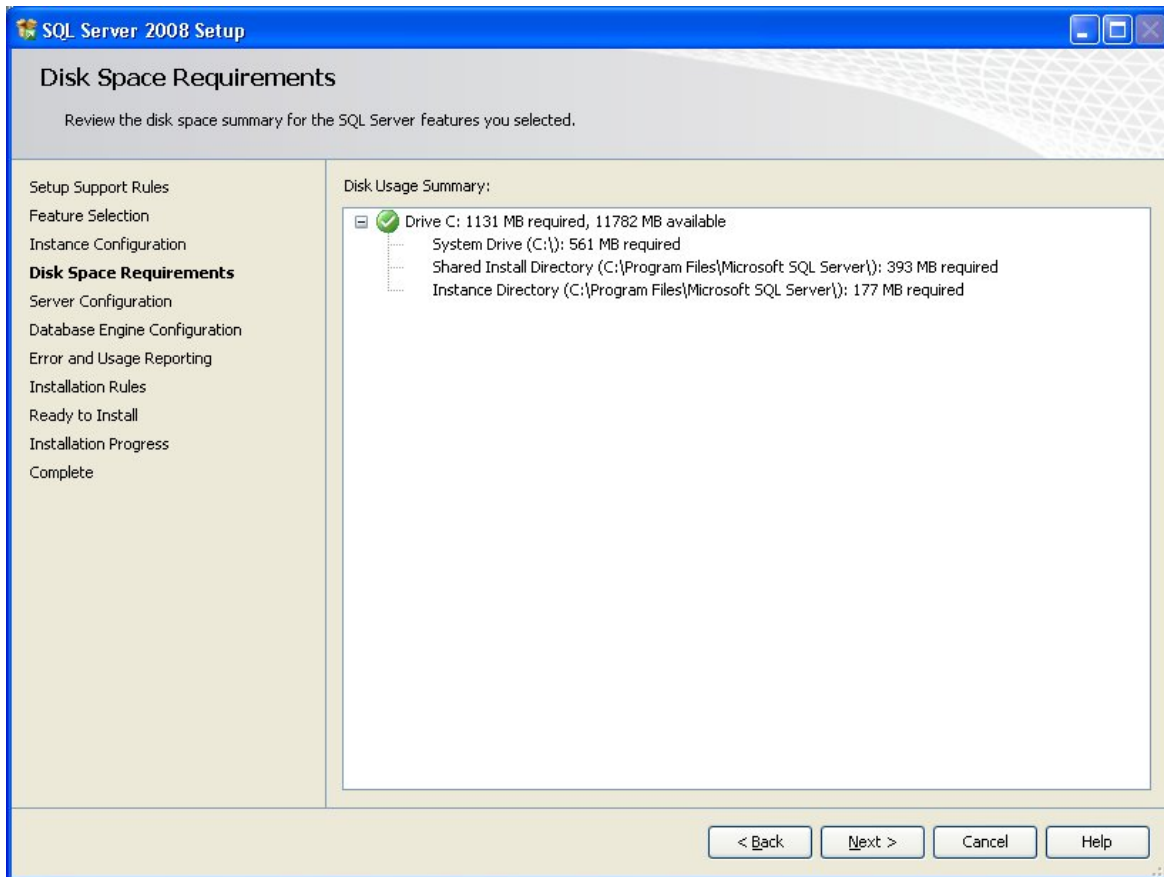
12. On the Feature Selection window, click Select All, then click Next to continue.



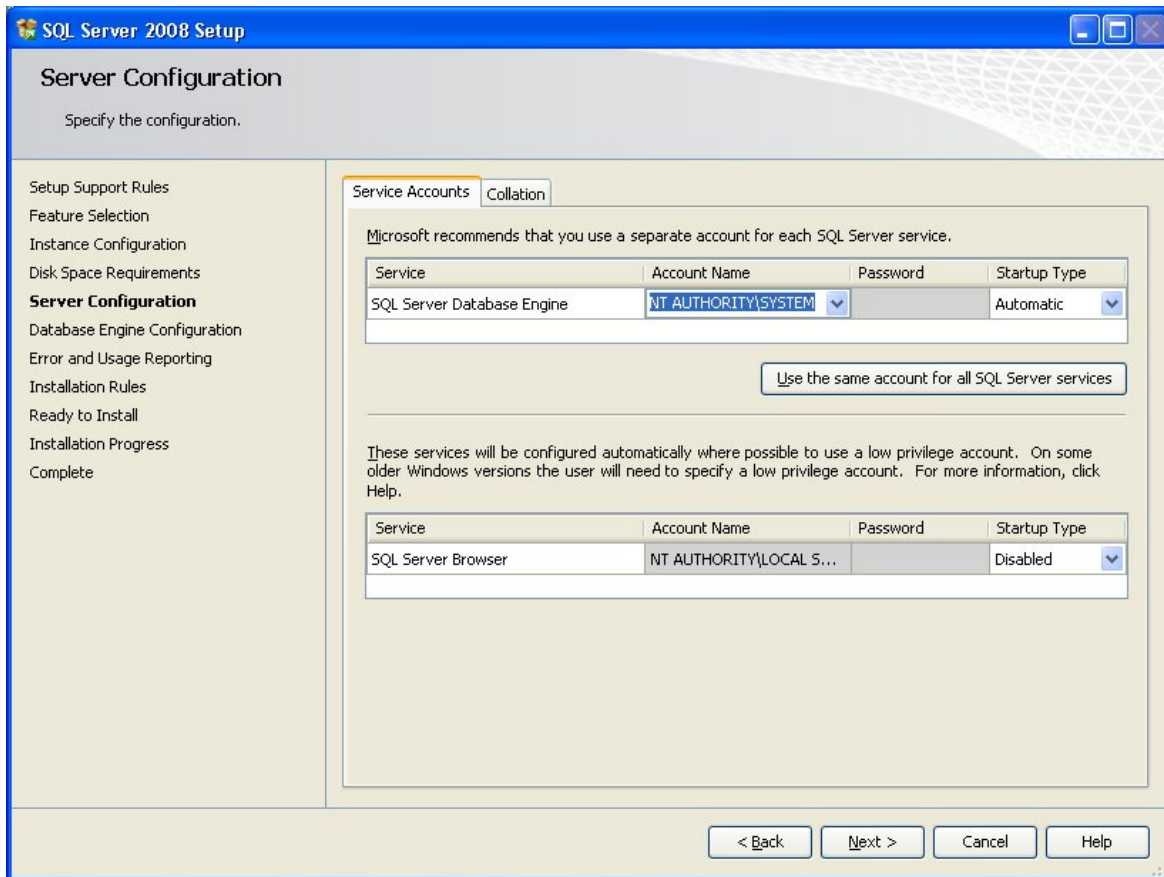
13. The Instance configuration window will be displayed, click Next to accept the default options and continue.



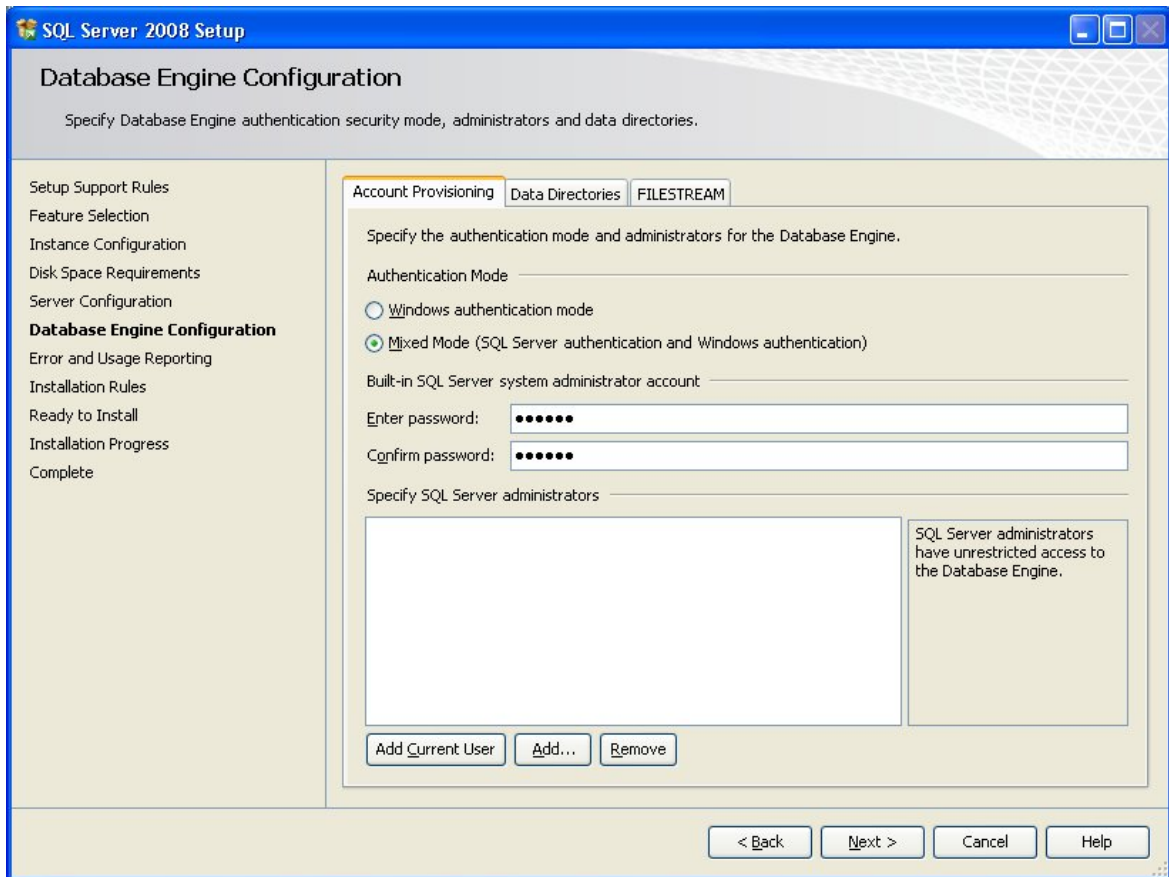
14. The Disk Space Requirements window will be displayed. Click Next to continue.



15. Select NT\_AUTHORITY\SYSTEM as the SQL Server Database Engine account name. Accept all other default settings and click Next to continue.

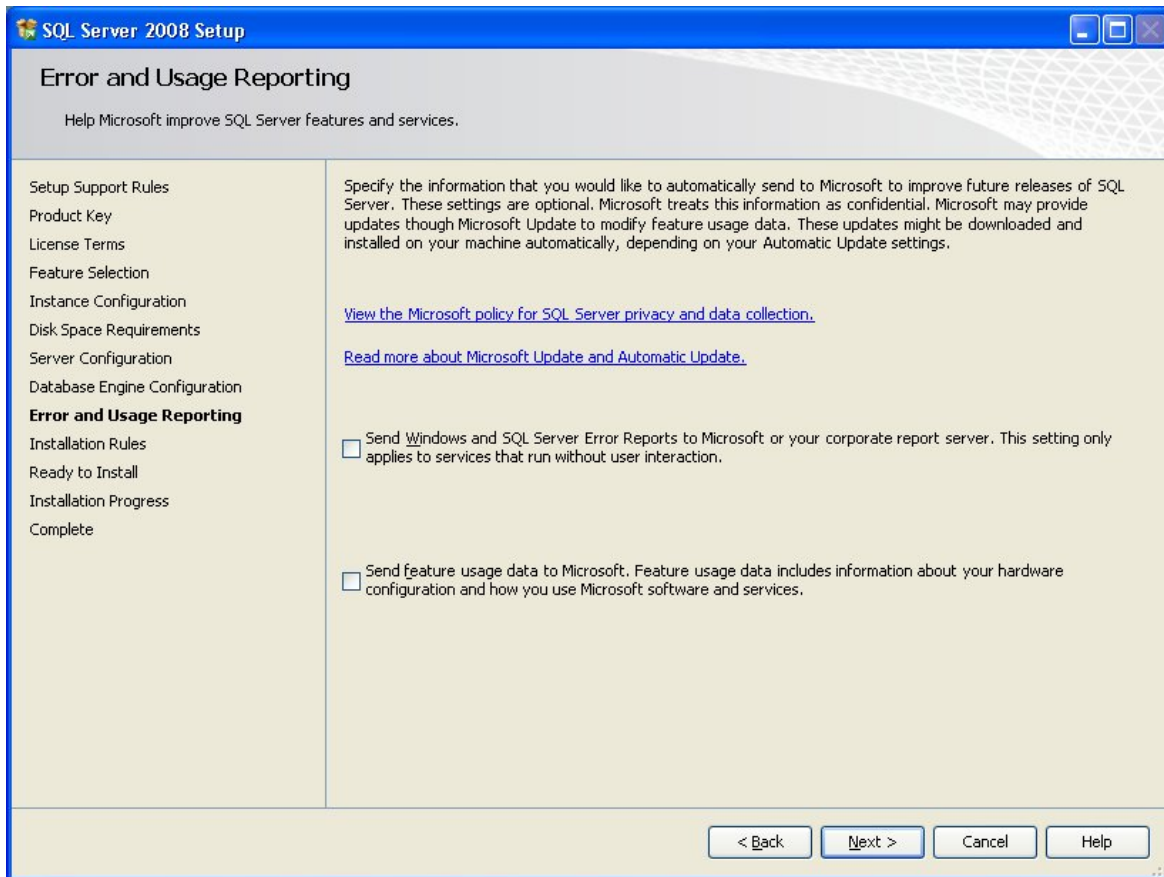


16. The Database Engine Configuration window will be displayed.  
 Check Mixed Mode Authentication and enter a password for the default database administrator ('sa')  
 Click Add Current User or Add button to add an administrator account.



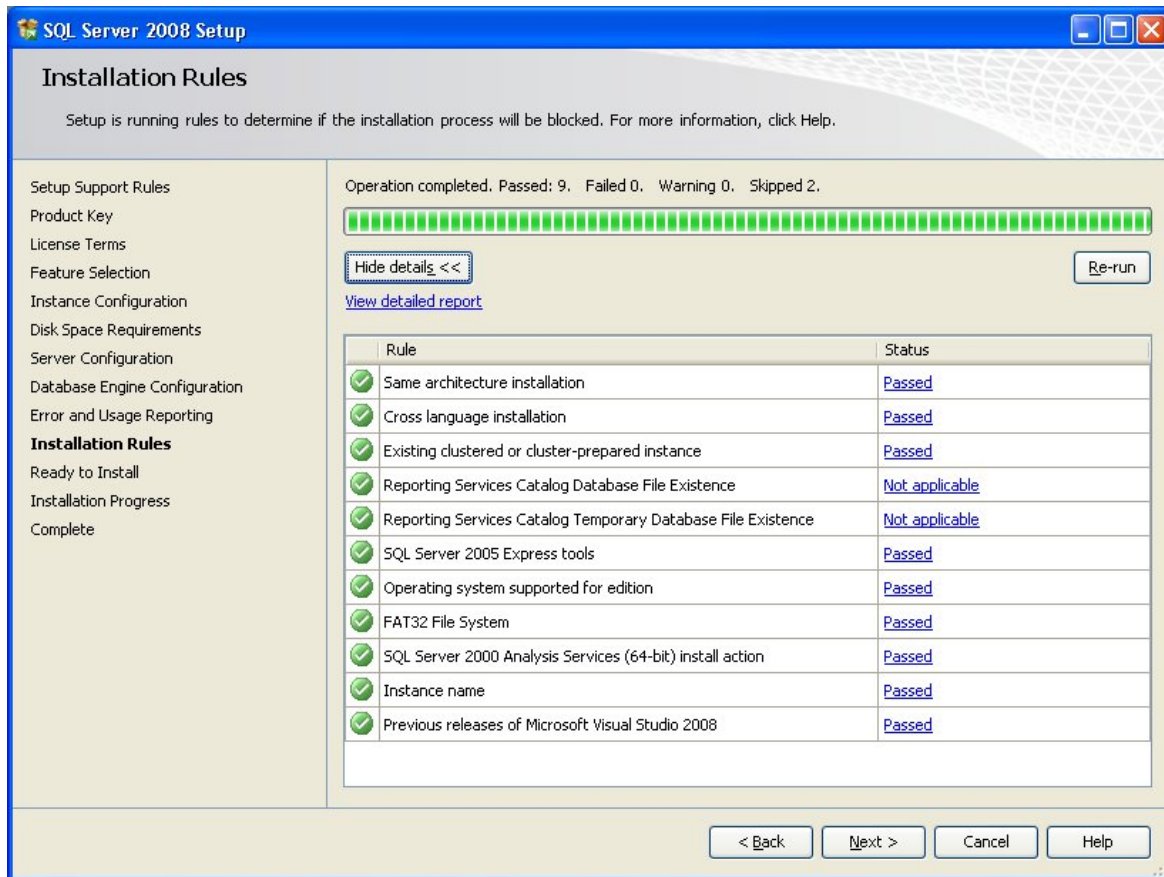
Accept all other defaults and click Next to continue.

17. You may chose to participate in Error or Usage reporting by checking either checkbox.



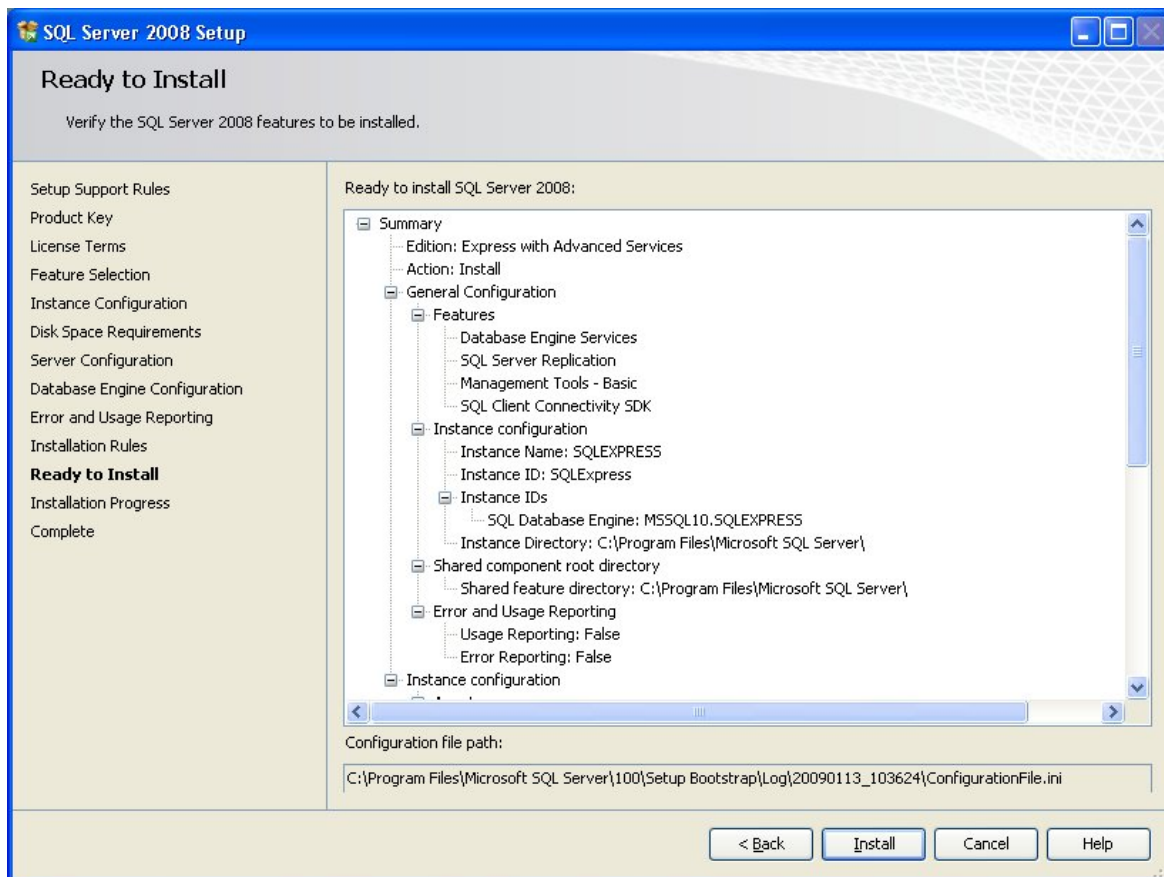
Click Next to continue

18. The Installation Rules window will display. If your system has not passed all the Rule tests, you may need to make system configuration changes and restart the installation process.

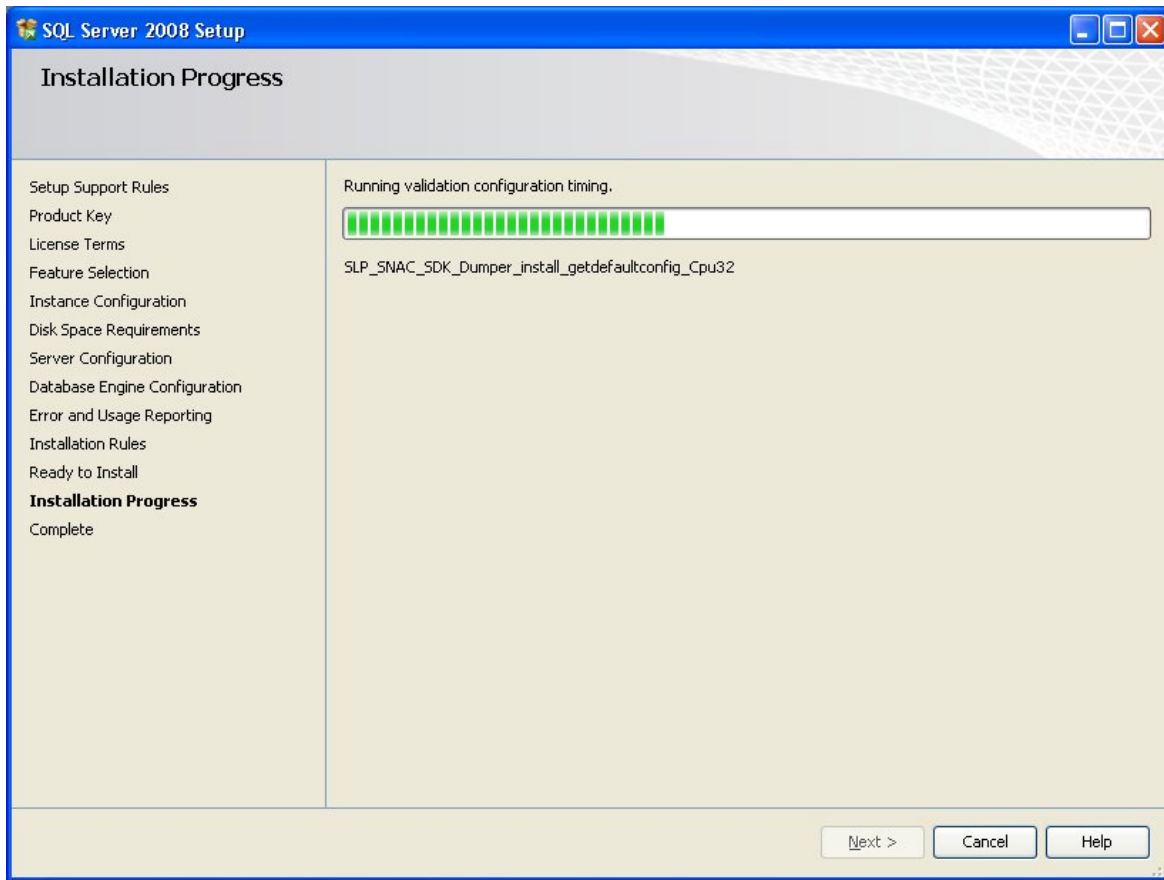


Click Next to continue.

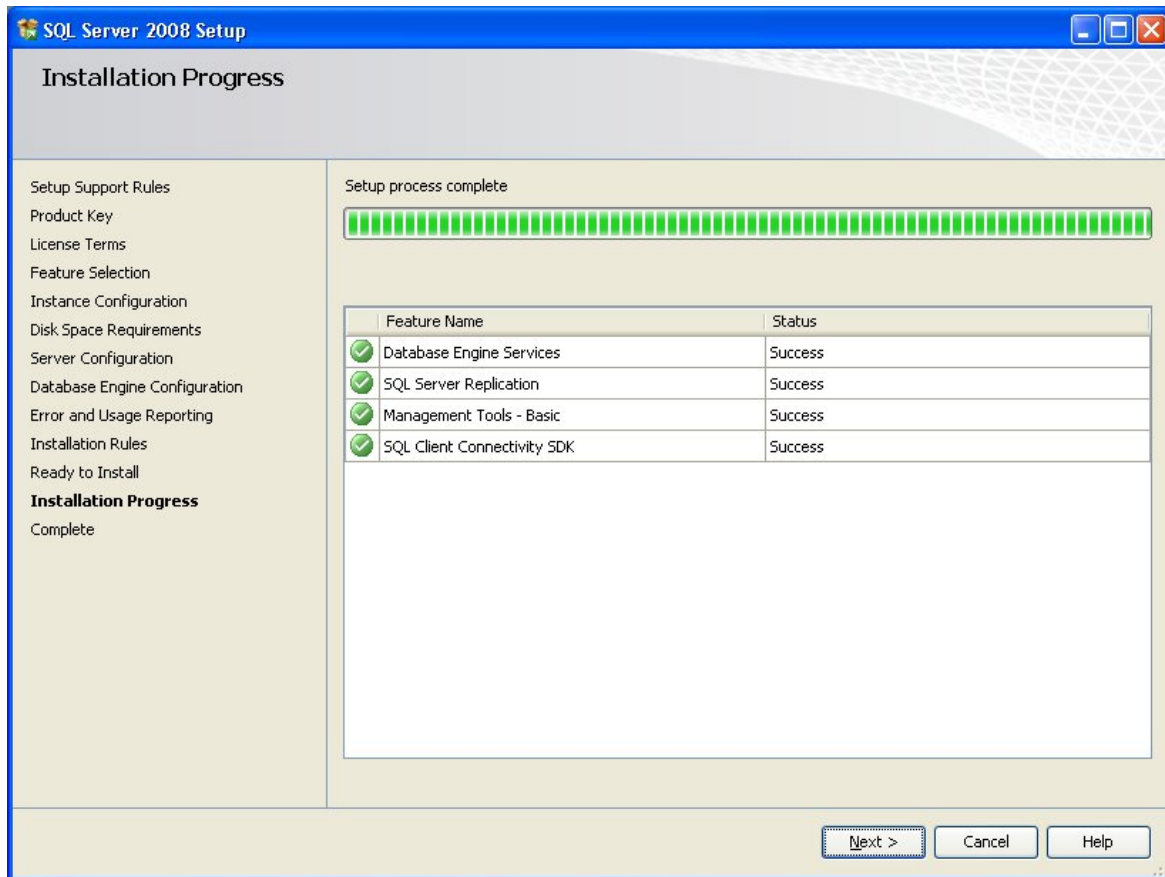
- The Ready to Install window will display a summary of the choices made so far. Click Install to continue.



20. The Installation Progress screen will keep you updated on the status of the installation.

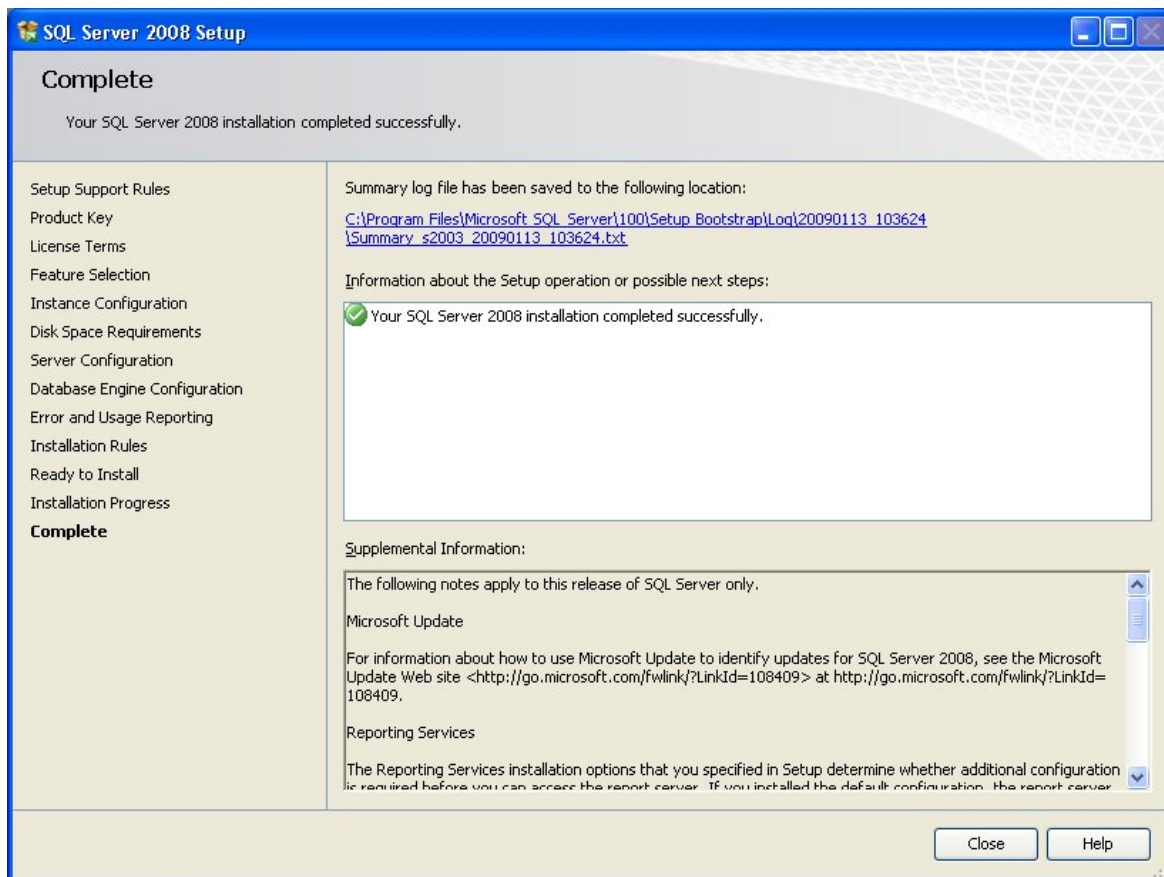


21. The Installation Progress window will display a summary when installation is complete.



Click Next to continue.

22. The Installation Complete window will be displayed.



23. Click Close to finish the process.

### See also

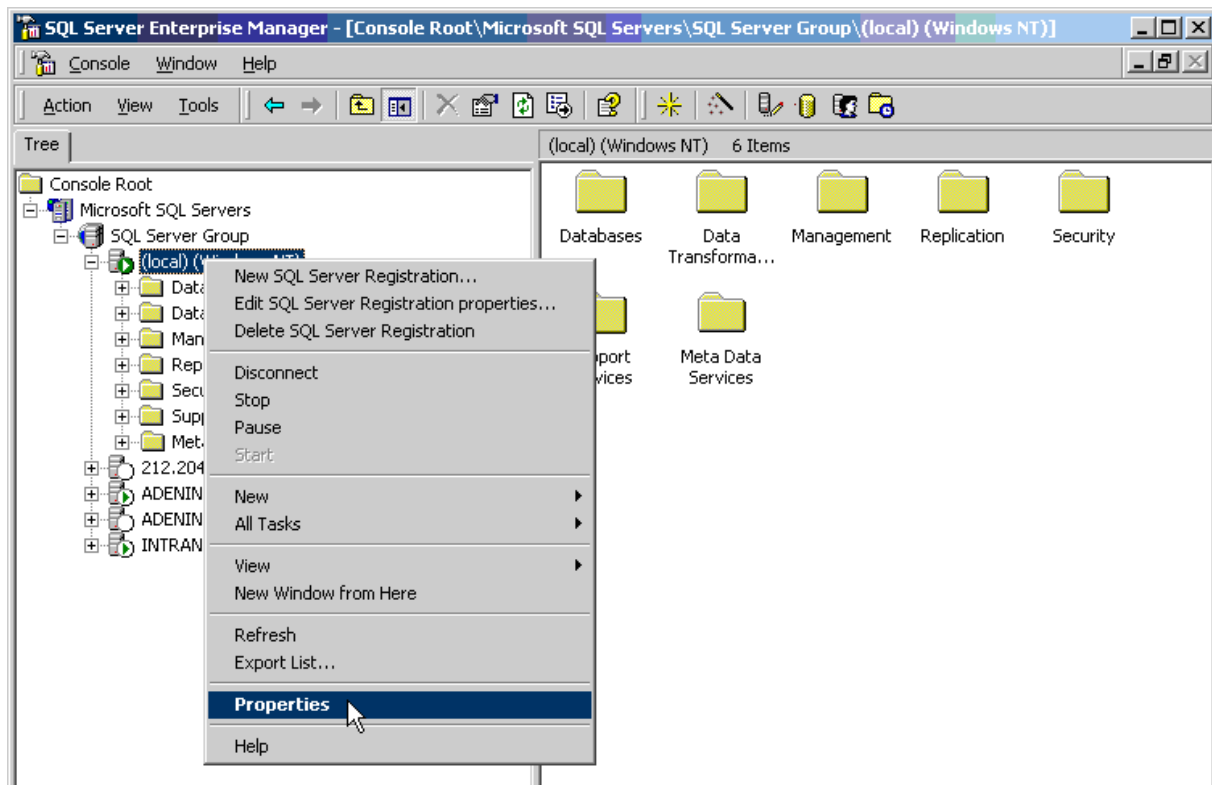
[System Configuration](#)  
[Configuring SQL For Windows/Mixed Authentication](#)

Home > Before You Begin > Configuring SQL For Windows/Mixed Authentication

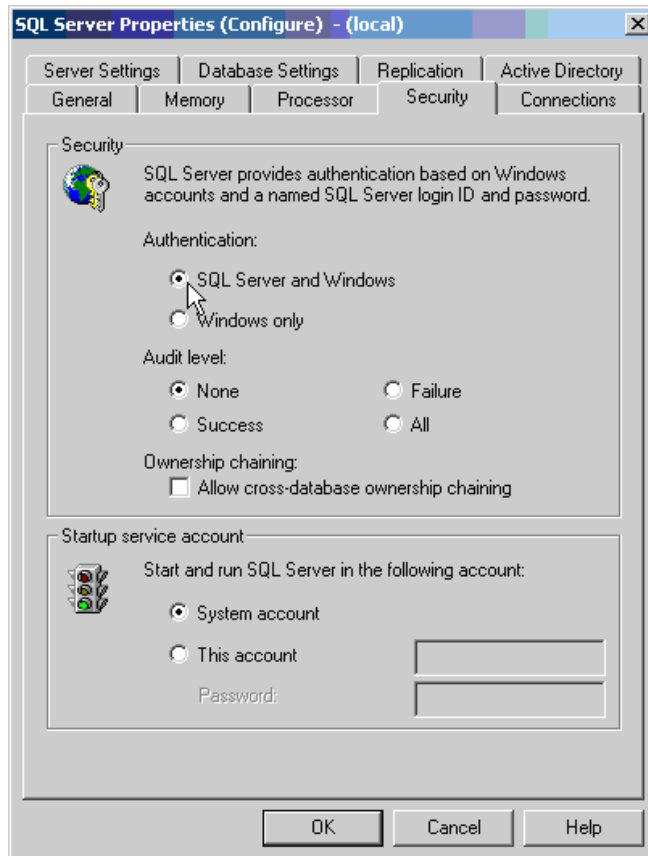
## Configuring SQL For Windows/Mixed Authentication

The adenin server requires an SQL Server 2000 (or later) running in Mixed (also called "SQL Server and Windows") authentication mode.

To check and/or change the authentication settings, start the SQL Server Enterprise Manager, right click on the server name, and select Properties



On the property settings select the Security tab and make sure that SQL Server and Windows authentication is selected.



See also

[System Configuration](#)

[Installing SQL Server Express 2008](#)

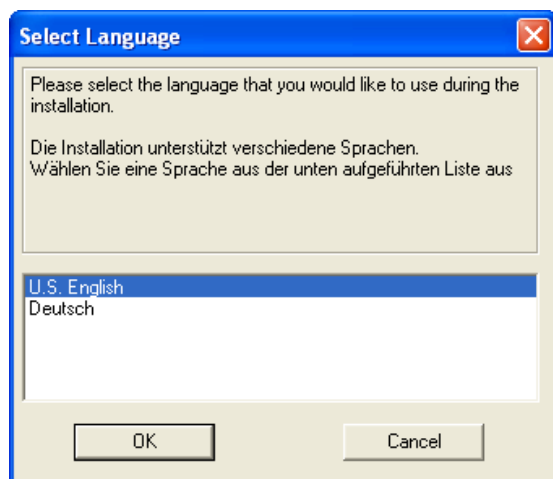
Home > Installation

## Installation

Double-click the Installer EXE file.

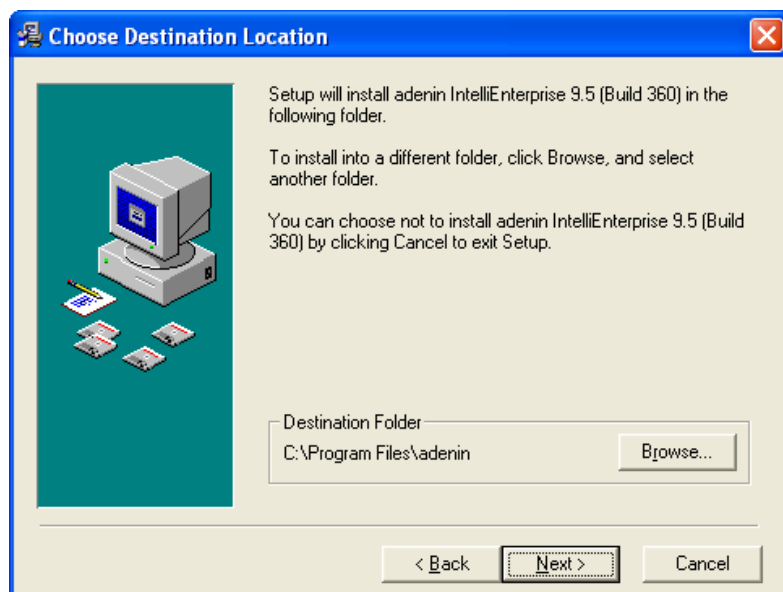
The Installation Wizard will guide you through setup steps.

First, select the language to be used on the Demo site. Click OK.

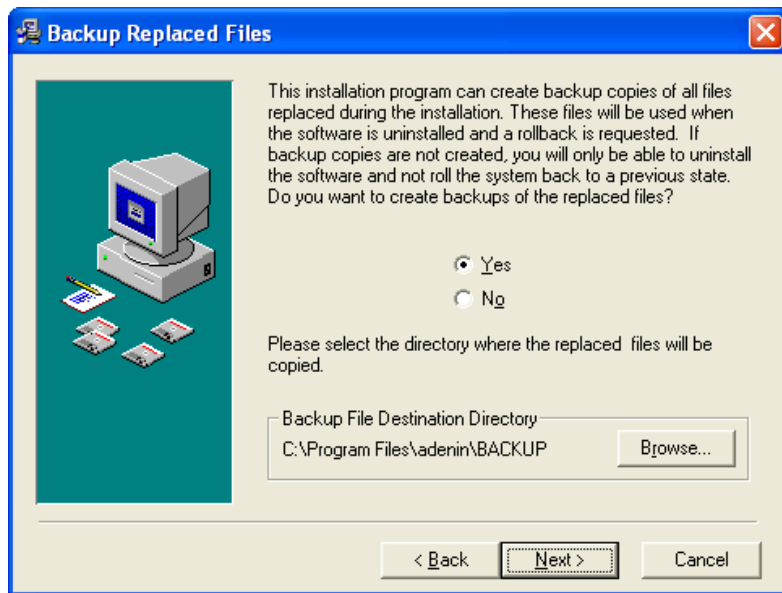


On the following Welcome screen, click Next.

Select the Installation Location or accept the default. Click Next.



Select if you wish Backup copies of existing files to be made. Click Next.



On the Ready to Install screen, click Next.

The Installation progress will be displayed. Once completed, The Configuration Wizard will launch automatically.

#### See also

- [Overview](#)
- [Before You Begin](#)
- [Configuration](#)
- [Licensing](#)
- [Additional Server Configuration](#)
- [Demo Site](#)
- [Production Site](#)
- [Administrative Configuration](#)
- [Get Started](#)
- [Appendix](#)

Home > Configuration

## Configuration

### Configuration Wizard

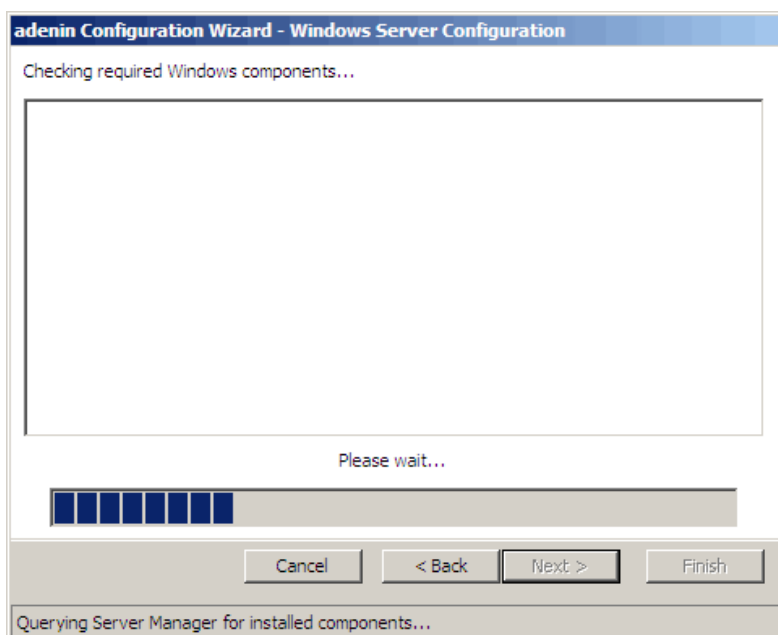
The Configuration Wizard starts after the Installation is finished. If the installation requires a reboot, the Wizard launches automatically after the reboot is completed.

On the Start page, click Next to begin.

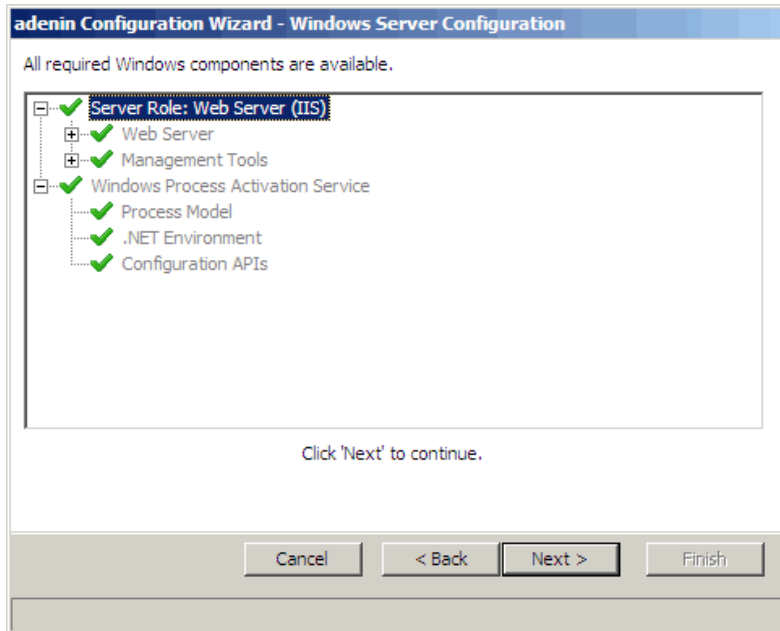


### Windows 2008/Windows Vista IIS Setup

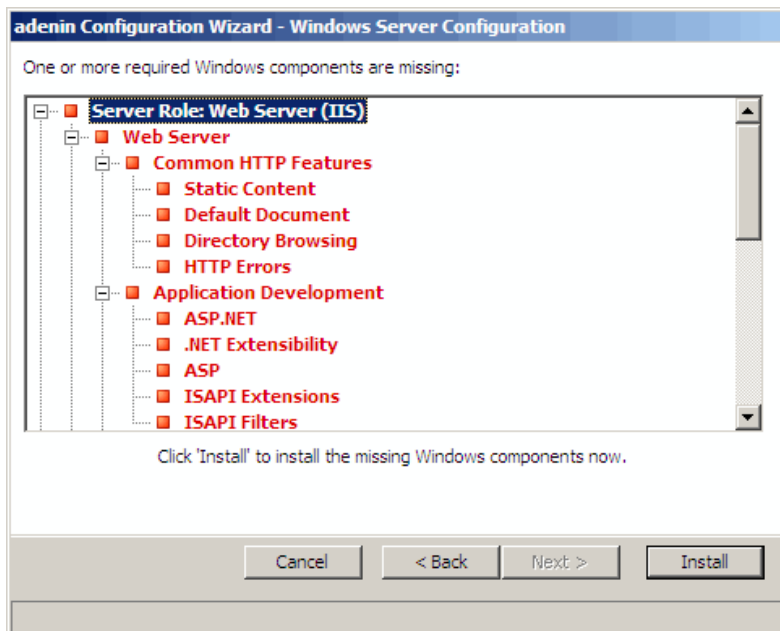
If you are running Windows2008 or Windows Vista, the installer will check for the proper installation and configuration of IIS. If you are running any other version of Windows, you will be directed straight to the Choose Destination Location dialog as the next step.



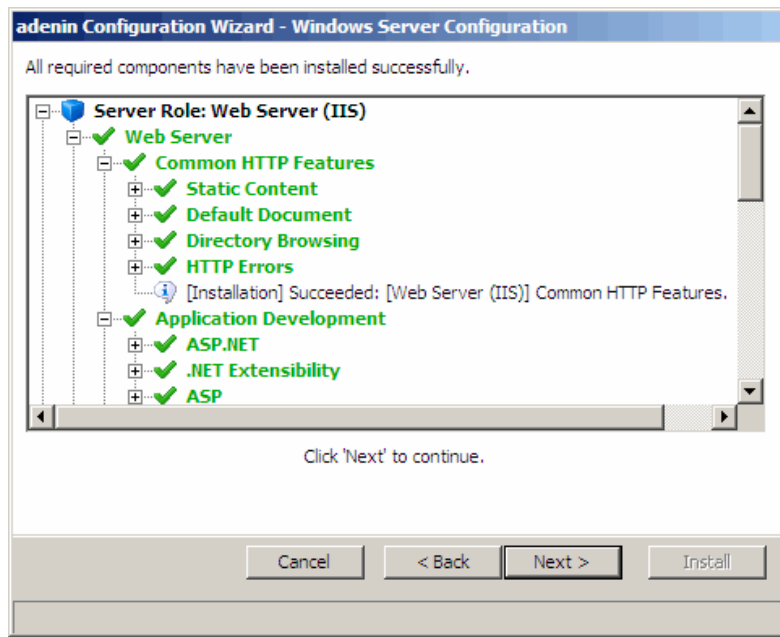
If IIS is properly installed and configured, you will see the following screen.  
Click Next to continue on to Choose Destination Location.



If IIS is not properly installed and configured, you will see the following screen.  
Click Install to set up IIS.



When IIS has been properly installed and configured, you will receive this success dialog.  
Click Next to continue.



## Select Web Site

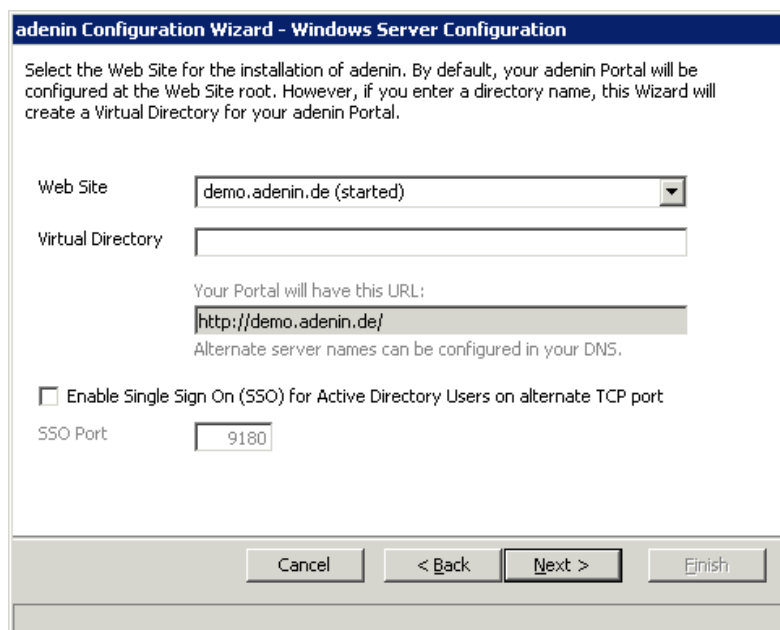
Select a Web Site for the dropdown. In most cases, you should select the Default Web Site.

By default the new web site will be created as a root web site and could be accessed at <http://hostname/>

By entering a value in the Virtual Directory field (e.g. adenin) the Configuration Wizard creates a virtual directory below the web site root, allowing you to access the intranet at e.g. <http://hostname/adenin>

Check the next check box if you wish to enable ActiveDirectory Enable Single Sign On (this setting could also be enabled after the initial installation is finished by restarting the Configuration Wizard).

Click Next.

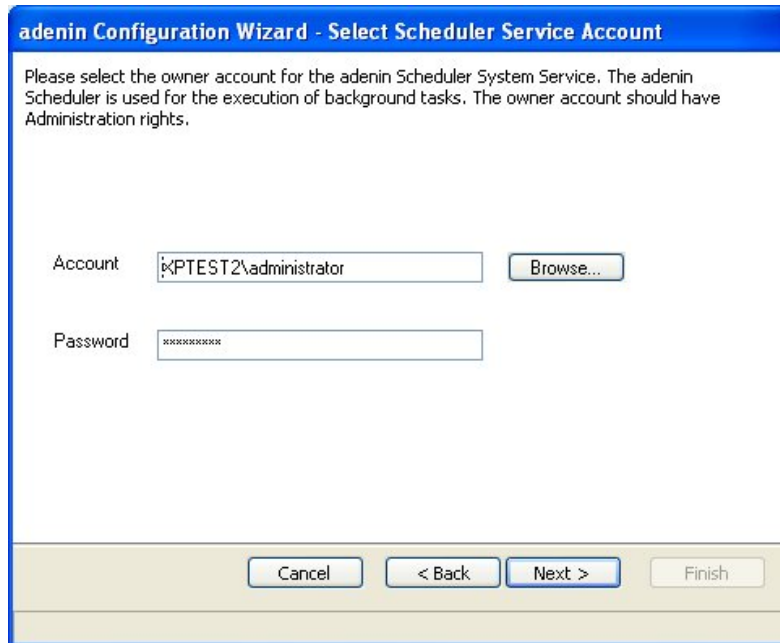


## Select Scheduler Service Account

The adenin Scheduler Service is used to execute recurring tasks in the background and requires an owner account to complete these tasks.

Enter details of an account with local administration rights. If you intend to use the Filespider feature, this account must also have access rights to the spidered drives.

Click Next to continue.



The screenshot shows a dialog box titled "adenin Configuration Wizard - Select Scheduler Service Account". The text inside reads: "Please select the owner account for the adenin Scheduler System Service. The adenin Scheduler is used for the execution of background tasks. The owner account should have Administration rights." Below this text are two input fields: "Account" and "Password". The "Account" field contains the text "PTEST2\administrator" and has a "Browse..." button to its right. The "Password" field contains a series of asterisks "\*\*\*\*\*". At the bottom of the dialog box, there are four buttons: "Cancel", "< Back", "Next >", and "Finish". The "Next >" button is highlighted with a blue border.

## Select Anonymous User Account

By default, the anonymous access of the adenin virtual directory security is controlled by the same account used for the adenin scheduler service. User authentication is performed against the adenin user database. NTLM or Integrated security is supported but must be configured manually.

Check the checkbox if you wish to use the same account as the Scheduler. Otherwise, enter the alternate user's criteria and click Next.

**adenin Configuration Wizard - Anonymous User Account**

Select the Windows User Account used to access this computer when an unauthenticated/anonymous user connects to the adenin site.

Same as Scheduler Account

Account: XPTEST2\administrator

Password: \*\*\*\*\*

### Select Database Server

Select the SQL server which will host the adenin database.

The default name for the adenin database is adenin. It is recommended to use the default name, unless you have unique needs. By completing this step, you will create or overwrite the adenin database.

Click Next to continue.

**adenin Configuration Wizard - Database Connection**

Specify the connection information to a MS SQL Server/MSDE:

Select or enter a SQL server name: (local)

Database name: adenin

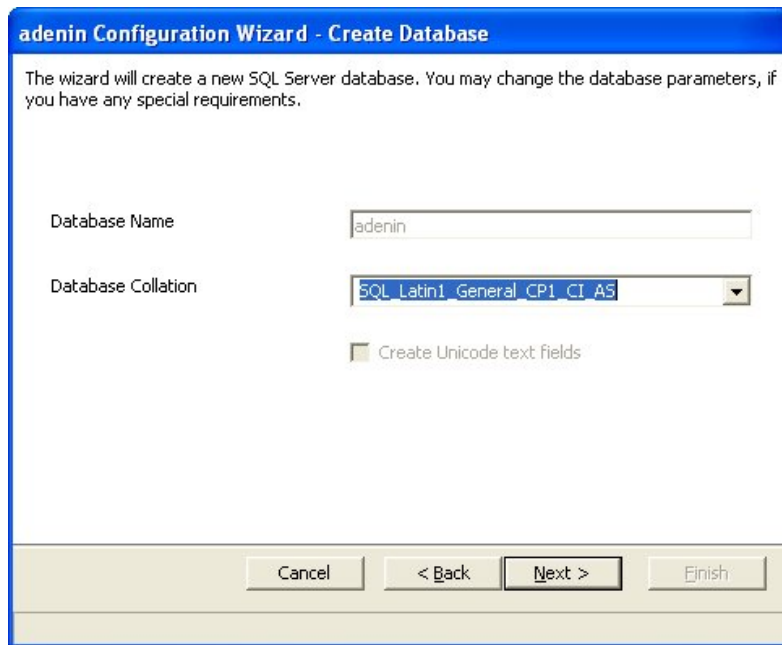
SQL server user name: sa

Password: \*\*\*\*\*

This Wizard creates the database with default settings. If you want to use a customized database (e.g. use a custom location for the database file) the database must be created before the wizard is started. Use Microsoft SQL Server Enterprise Manager (or a similar tool) to create an empty database.

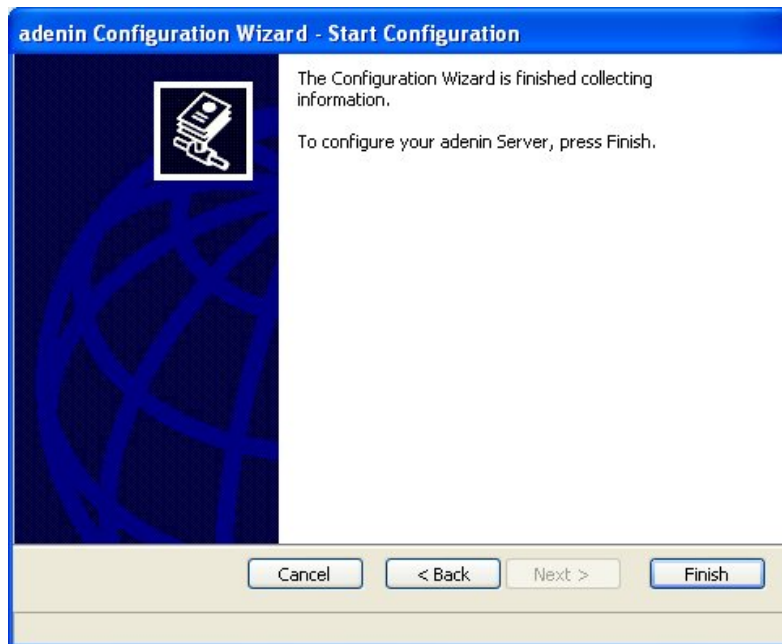
Execute the CreateDatabase.sql script from the adenin\tools directory (default C:\Program Files\adenin\tools\CreateDatabase.sql) to initialize the new database and to load meta and sample data.

Select the character set for your database, including optional Unicode support, and click Next.

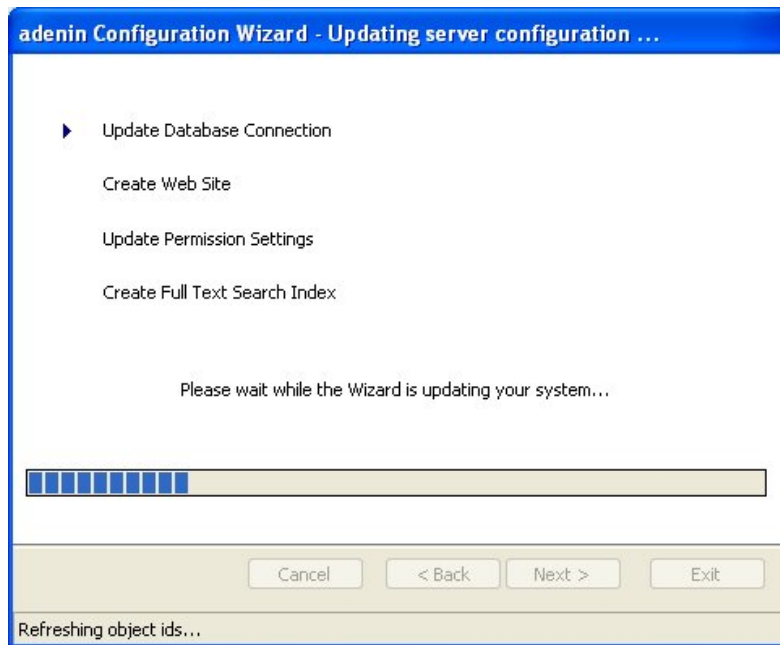


### Finish Configuration Process

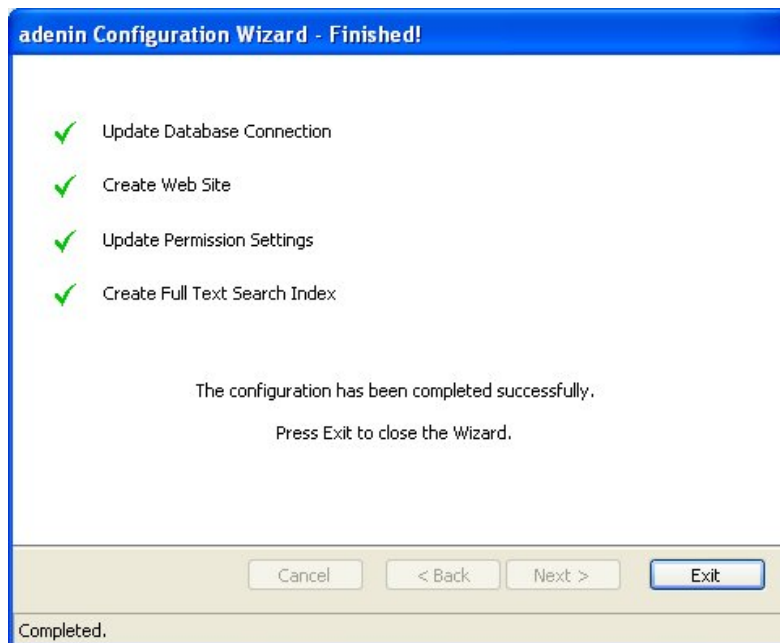
Click Finish to start the server configuration process using the setting selected through the Wizard.



The progress of your installation will be displayed.

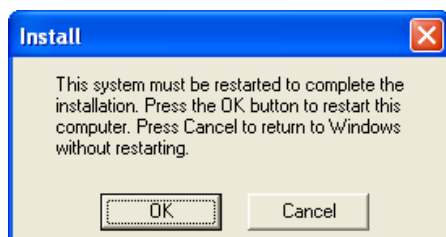


You may be asked to confirm user rights assignments during this process. Click OK to continue. The last page shows the configuration summary. Click Exit to finish.



Please contact [support@adenin.com](mailto:support@adenin.com) for assistance if any of the steps failed. A failed step will not display a green success checkmark.

After Installation and Configuration are complete, you may be prompted to restart your computer. Click OK.



After the Configuration is finished, the Wizard can be started again for any changes in the Configuration (Programs -> adenin -> Configuration Wizard).

### See also

[Overview](#)

[Before You Begin](#)

[Installation](#)

[Licensing](#)

[Additional Server Configuration](#)

[Demo Site](#)

[Production Site](#)

[Administrative Configuration](#)

[Get Started](#)

[Appendix](#)

Home > Licensing

## Licensing

Please start the Server Health Check after the Configuration Wizard has finished to ensure the server is properly configured and to complete Licensing.

To start the Server Health Check, double-click the icon on your Desktop or select. Start > All Programs > adenin > Server Health Check.

adenin  
TECHNOLOGIES

**adenin IntelliEnterprise  
Server Health Check**

Use this page to detect and analyze potential problems on your adenin server.

[General] [Versions]

Server Id	1B3F243C213D551443161C7B1E0D020A0E14190A010806125049575C5A5715	
License	No license file found. Please click <a href="#">here</a> to request an evaluation license.	
Server Version	9.5 (Build 366, Core 090000, Inst 090000)	
DB Version	090000	
Execute Permissions	OK	
Directory Permissions	C:\Program Files\adenin\cache	OK
	C:\Program Files\adenin\content	OK
	C:\Program Files\adenin\history	OK
	C:\Program Files\adenin\portal	OK
	C:\Program Files\adenin\scripts\newsfeed	OK
	C:\Program Files\adenin\temp	OK
	C:\Program Files\adenin\usercache	OK
	C:\Program Files\adenin\web\cache	OK
	C:\Program Files\adenin\web\images	OK
	C:\Program Files\adenin\web\dm	OK
	C:\Program Files\adenin\WebMail	OK
	C:\Program Files\adenin\GridViewer\TempReports	OK
Database Connection	OK	
Web Connection	OK	
Scheduler	OK: Scheduler Service is running	
Batch Queue	OK	
Cache	OK: 2 File(s)	

Done Local intranet 100%

There are two common reasons for an Error 404 page to appear instead of the Server Health Check Results:

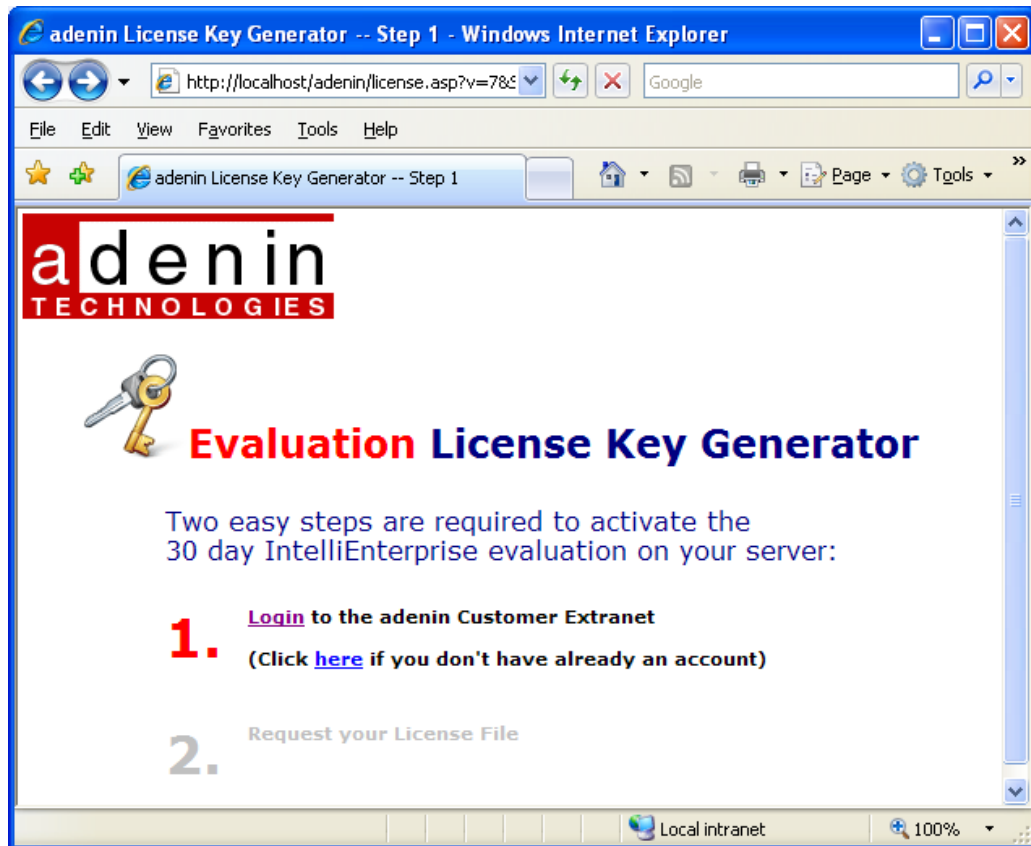
- A proxy server has been used to access web site and the proxy server cannot access the local server. In this case, enable proxy bypass for localhost (Internet Explorer -> Tools -> Internet Options -> Connections -> LAN Settings -> Bypass proxy server (sometimes localhost must also be added on Proxy Server -> Advanced...))
- A non-default web site was used. In this case replace the `http://localhost/adenin/portalcheck.asp` with `http://<your website address>/adenin/PortalCheck.asp`

The Server Health Check will show the message **No license file found. Please click here to request an evaluation license.**

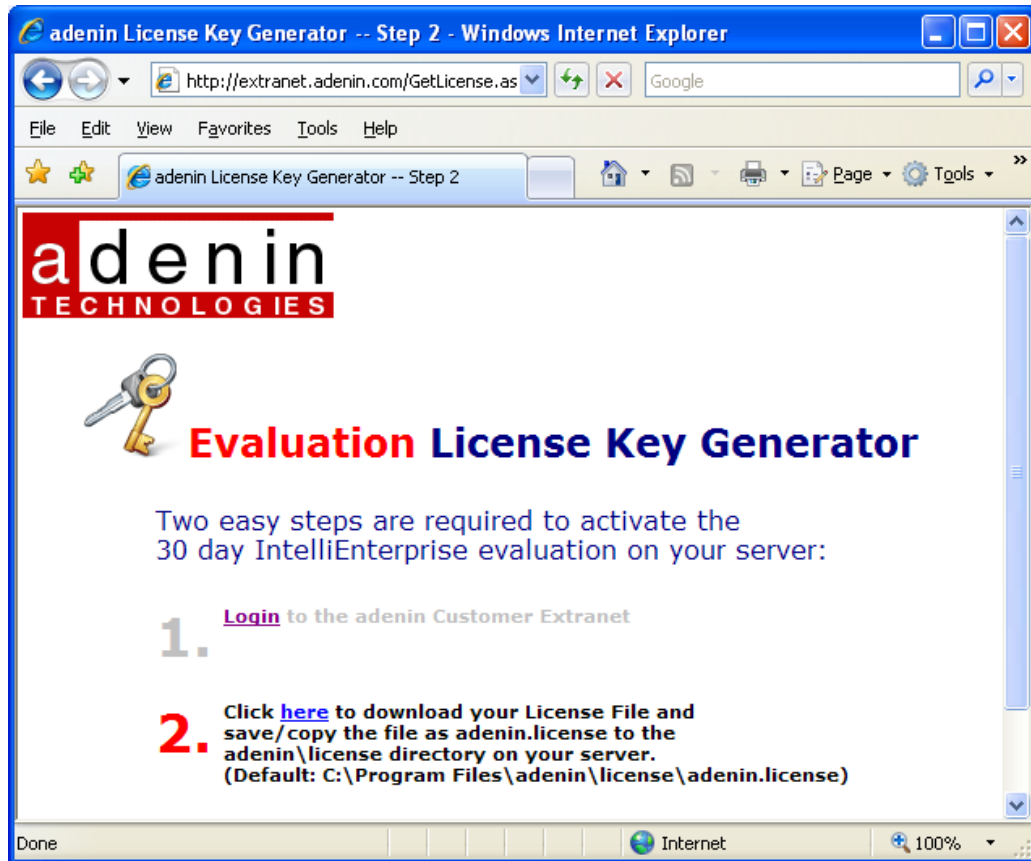
Click the [here](#) link to start the online activation

An internet connection is required the online activation. If no internet connection is available, the activation can also be done by eMail. Please copy and paste the Server Id from the adenin Server Health Check to a new eMail. Send this eMail to [sales@adenin.com](mailto:sales@adenin.com) with the subject: license request.

On the Evaluation Key Generator Page, click the [Login](#) link.

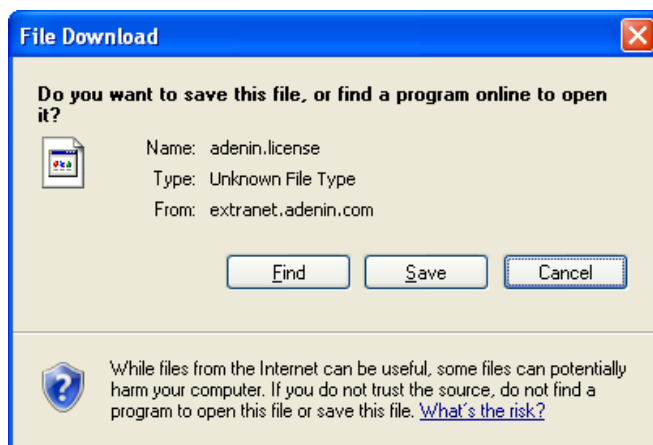


You will be redirected to the Extranet login page. Enter your credentials to login to the adenin Extranet. You will be redirected back to the Evaluation Key Generator page.



Click the [here](#) link to download the license file.

You will be prompted to download the file. Click Save.



Save the license file with the name `adenin.license` in your `adenin\license` directory (Default: `C:\Program Files\adenin\license`)

For evaluation and development purposes, IntelliEnterprise may be used directly on the server without a license file. In this mode the access is restricted to localhost (the URL must start with either with `http://localhost/...` or `http://127.0.0.1/...`)

See also

[Overview](#)

[Before You Begin](#)

Installation  
Configuration  
Additional Server Configuration  
Demo Site  
Production Site  
Administrative Configuration  
Get Started  
Appendix

---

Home > Additional Server Configuration

## Additional Server Configuration

Depending on the features you wish to use, you may need to take additional steps to fully configure your Server.

### Install Adobe Reader

The Adobe PDF IFilter is required to allow adenin to full-text search PDF files. The IFilter is installed as part of [Adobe Reader](#).

### Install Office 2007 IFilter pack

If your organization uses Office 2007 and plans to upload files in .docx, .xlsx and .pptx formats, you will need to install the [Office 2007 IFilter pack](#)

### Enable PDF Conversion

To allow the adenin server to convert MS Office documents to PDF on the portal, you must

1. Have a copy of Microsoft Office installed on the server
2. [Install the adenin PDF Conversion Addon](#)

### See also

[Overview](#)  
[Before You Begin](#)  
[Installation](#)  
[Configuration](#)  
[Licensing](#)  
[Demo Site](#)  
[Production Site](#)  
[Administrative Configuration](#)  
[Get Started](#)  
[Appendix](#)

[Home](#) > [Demo Site](#)

## Demo Site

To get an idea of the features and capabilities of adenin IntelliEnterprise, version 10 comes installed with a Demo site, containing sample data.

You can access the Demo Site via the Desktop shortcut, from Start > All Programs > adenin > Demo Site or by entering the following URL in a Web Browser <http://<<servername>>/PortalDemo.aspx> (e.g. <http://localhost/PortalDemo.aspx>).

If a custom Virtual Directory name was entered the Desktop shortcuts need to be adjusted to reflect the custom name. The URL of the Demo Site is <http://<<servername>>/<<virtualdirectory>>/PortalDemo.aspx> (e.g. <http://localhost/adenin/PortalDemo.aspx>).

The initial administrative User Id for the Demo Site is **admin** and the password is also **admin**.

### See also

- [Overview](#)
- [Before You Begin](#)
- [Installation](#)
- [Configuration](#)
- [Licensing](#)
- [Additional Server Configuration](#)
- [Production Site](#)
- [Administrative Configuration](#)
- [Get Started](#)
- [Appendix](#)

---

Home > Production Site

## Production Site

The Production Site is an empty Intranet site which can be used to building your own intranet portal..

All data and content created within an evaluation version will be maintained when you convert to a purchase.

You can access the Production Site via the Desktop shortcut, from Start > All Programs > adenin > Production Site or by entering the URL <http://localhost/portal.aspx> directly into your browser's Address Bar.

You can access the Production Site via the Desktop shortcut, from Start > All Programs > adenin > Production Site or by entering the following URL in a Web Browser <http://<<servername>>/> (e.g. <http://localhost/>).

If a custom Virtual Directory name was entered the Desktop shortcuts need to be adjusted to reflect the custom name. The URL of the Demo Site is <http://<<servername>>/<<virtualdirectory>>/> (e.g. <http://localhost/adenin/>).

The initial User Id for the Production Site is **admin** and the password is **admin**.

### See also

[Overview](#)

[Before You Begin](#)

[Installation](#)

[Configuration](#)

[Licensing](#)

[Additional Server Configuration](#)

[Demo Site](#)

[Administrative Configuration](#)

[Get Started](#)

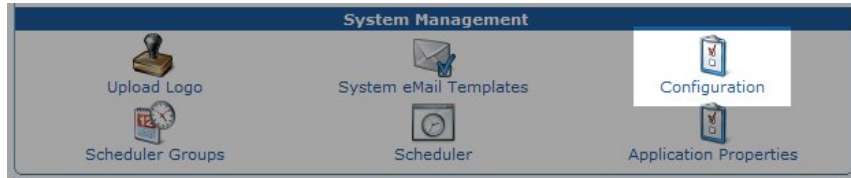
[Appendix](#)

Home > Administrative Configuration

## Administrative Configuration

Before you begin to work with your new intranet, you will need to set up the Administrative Configuration.

Log in to your Production Site.  
Click the Administration portal tab.  
Click the Configuration icon.



You will now be viewing the Configuration page

adenin TECHNOLOGIES
My Intranet | Preferences | QuickLinks | Help | Logout Amy E Hawthorne

Corporate | Departments | Portals | Groups | **Administration**

Reporting | Link Checkers | Poll Administration | test | Default User Profiles

**Configuration**

Configuration ▾ Section ▾ Level ▾ ↶ ↷

### Global Settings

<b>Fixed Style</b>	<input type="text" value=""/>	This option allows to select a fixed style for all users and disables the style selection from the user preferences pages.
<b>Layout Mode</b>	<input type="radio"/> Application Layout (Outlook Style) <input checked="" type="radio"/> Portal Layout	This property allows to switch the layout mode between the Application Layout (DynamicIntranet, Outlook Style) and the Portal Layout (IntelliEnterprise). You must close the web browser and login in again to activate a change of the Layout Mode.
<b>Text for My Home Link</b>	<input type="text" value="My Intranet"/>	The settings allows to override the name of the My Home. This can be used for the branding of the Intranet.
<b>Portal Hostpath*</b>	<input type="text" value="http://demo.adenin.com"/>	portal hostpath (used in mail notifications) e.g http://servername/adenin
<b>Portal Startpage*</b>	<input type="text" value="toaster2_en.asp"/>	e.g portal.asp
<b>Everyone Role</b>	<input type="text" value=""/>	All new users will be added to this role automatically.

### Security Policy

<b>Complex Passwords Required</b>	<input type="text" value="No"/>	If checked the password may not be similar to the first name or last name or display name or email address (default: No)
<b>Maximum Password age in Days</b>	<input type="text" value="0"/>	Maximum Password age in Days. If a password becomes older a change of the password is forced at time of the next login of the user. (0 = never force a password change) (default: 0)

At a minimum, you should enter your Mail Server settings at this time.

Click the Save icon to commit your changes.

### See also

[Overview](#)  
[Before You Begin](#)  
[Installation](#)  
[Configuration](#)  
[Licensing](#)  
[Additional Server Configuration](#)  
[Demo Site](#)  
[Production Site](#)  
[Get Started](#)  
[Appendix](#)

Home > Get Started

## Get Started

Once you have completed the Installation and Configuration steps in this document, you are ready to begin building your intranet.

Please visit <http://extranet.adenin.com> for resources such as the QuickStart Guide and KnowledgeBase.

### See also

[Overview](#)

[Before You Begin](#)

[Installation](#)

[Configuration](#)

[Licensing](#)

[Additional Server Configuration](#)

[Demo Site](#)

[Production Site](#)

[Administrative Configuration](#)

[Appendix](#)

Home > Appendix

## Appendix



[Enable IIS on Windows 2003](#)

Home > Appendix > Enable IIS on Windows 2003

## Enable IIS on Windows 2003

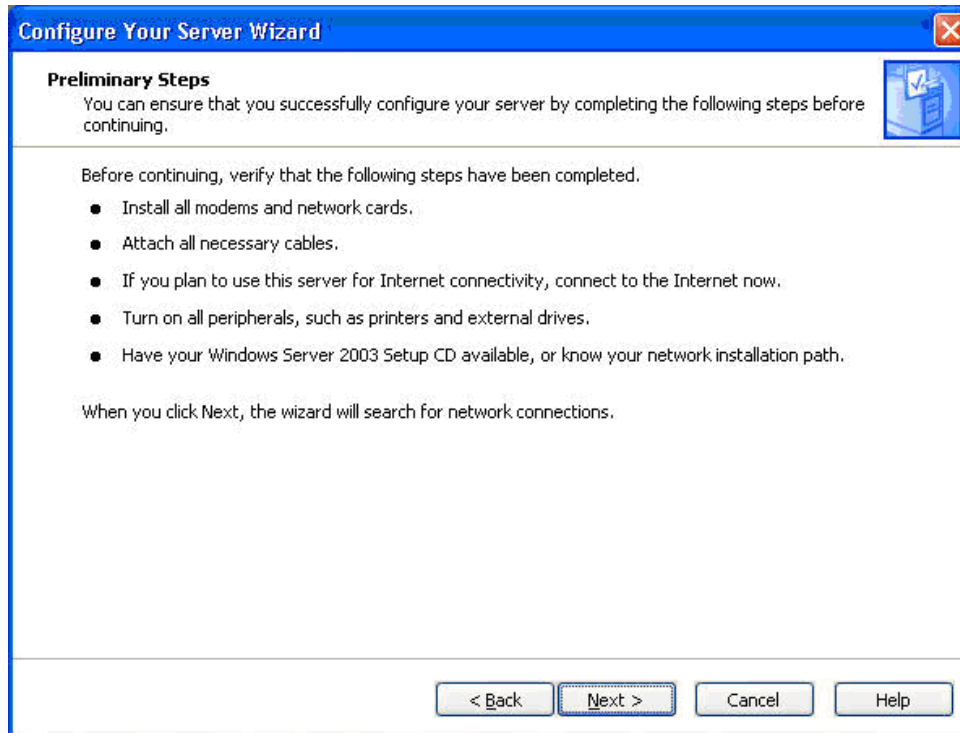
On Windows 2003 the Internet Information Server (IIS) is not installed by default.

To enable/install IIS on Windows 2003 go to Start > Programs > Administrative Tools > Configure Your Server Wizard

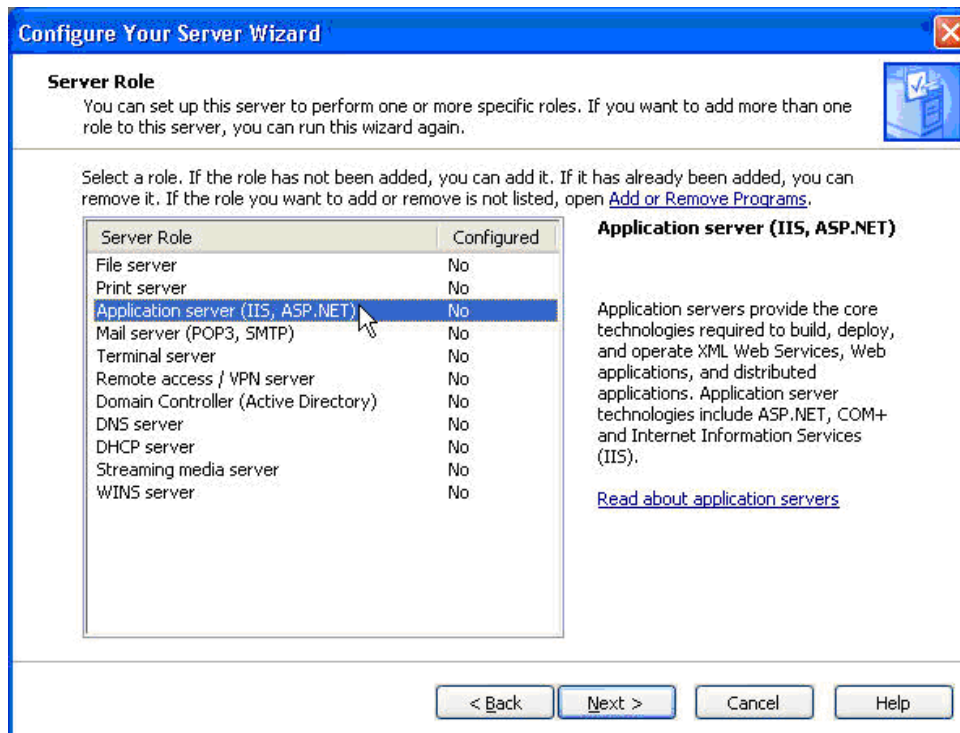
From the start page, click Next.



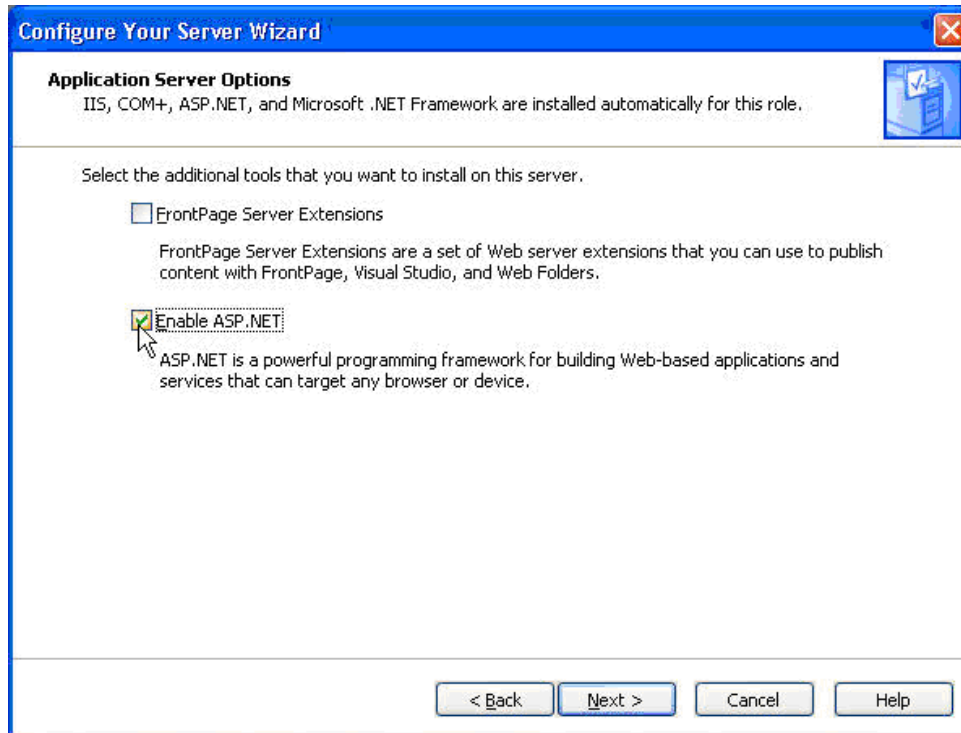
Click Next to begin the wizard.



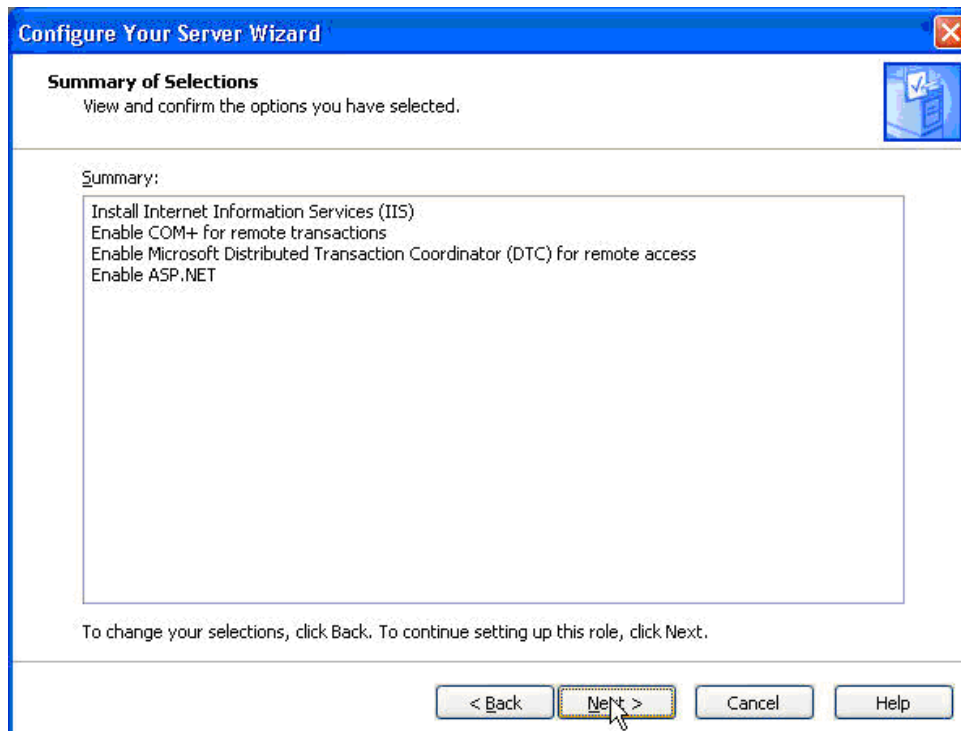
Select Application server (IIS, ASP.NET) and click Next



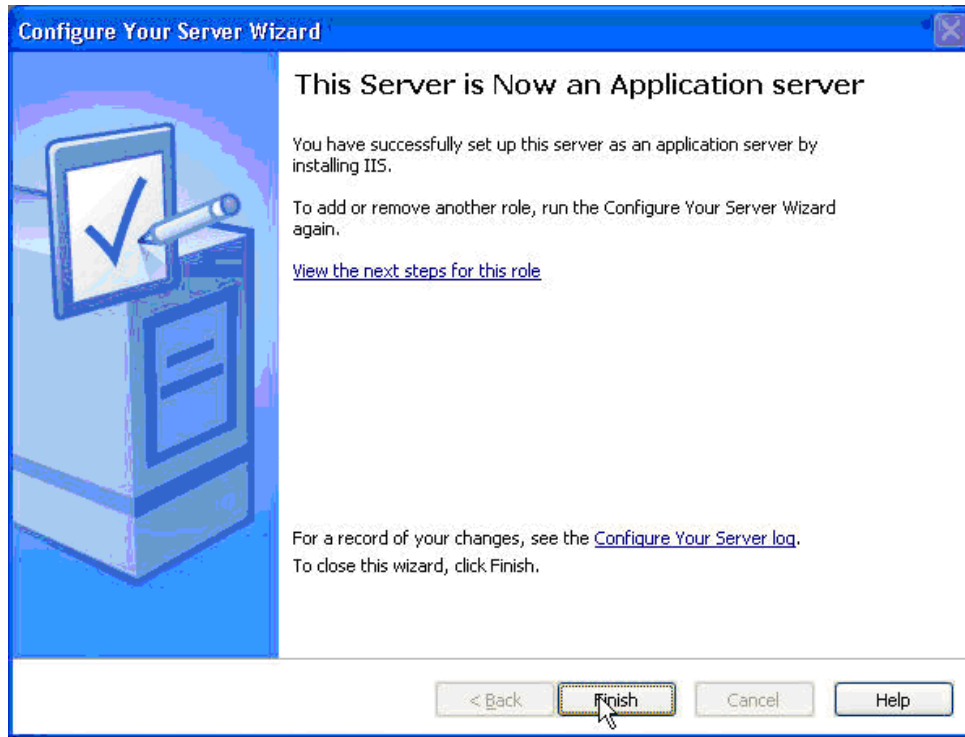
Check Enable ASP.NET then click Next.



Click Next



The Wizard will complete installation.  
Click Finish to complete Installation.



See also